



BUILDING CODE COMPLIANCE OFFICE (BCCO)
PRODUCT CONTROL DIVISION

MIAMI-DADE COUNTY, FLORIDA
METRO-DADE FLAGLER BUILDING
140 WEST FLAGLER STREET, SUITE 1603
MIAMI, FLORIDA 33130-1563
(305) 375-2901 FAX (305) 375-2908

www.buldingcodeonline.com

NOTICE OF ACCEPTANCE (NOA)

Lawson Industries, Inc.
8501 NW 90th Street
Medley, FL 33166

SCOPE:

This NOA is being issued under the applicable rules and regulations governing the use of construction materials. The documentation submitted has been reviewed by Miami-Dade County Product Control Division and accepted by the Board of Rules and Appeals (BORA) to be used in Miami Dade County and other areas where allowed by the Authority Having Jurisdiction (AHJ).

This NOA shall not be valid after the expiration date stated below. The Miami-Dade County Product Control Division (In Miami Dade County) and/or the AHJ (in areas other than Miami Dade County) reserve the right to have this product or material tested for quality assurance purposes. If this product or material fails to perform in the accepted manner, the manufacturer will incur the expense of such testing and the AHJ may immediately revoke, modify, or suspend the use of such product or material within their jurisdiction. BORA reserves the right to revoke this acceptance, if it is determined by Miami-Dade County Product Control Division that this product or material fails to meet the requirements of the applicable building code.

This product is approved as described herein, and has been designed to comply with the Florida Building Code, including the High Velocity Hurricane Zone.

DESCRIPTION: Series 3200 Outswing Aluminum Casement Window – L.M.I.

APPROVAL DOCUMENT: Drawing No. L3200-0801, titled "Series: 3200 Outswing Impact Casement Window", sheets 1 through 7 of 7, dated 07/27/08, prepared by manufacturer, signed and sealed by Thomas J. Sotos, P.E., bearing the Miami-Dade County Product Control Approval stamp with the Notice of Acceptance number and approval date by the Miami-Dade County Product Control Division.

MISSILE IMPACT RATING: Large Missile Impact Resistant

LABELING: Each unit shall bear a permanent label with the manufacturer's name or logo, city, state and following statement: "Miami-Dade County Product Control Approved", unless otherwise noted herein.

RENEWAL of this NOA shall be considered after a renewal application has been filed and there has been no change in the applicable building code negatively affecting the performance of this product.

TERMINATION of this NOA will occur after the expiration date or if there has been a revision or change in the materials, use, and/or manufacture of the product or process. Misuse of this NOA as an endorsement of any product, for sales, advertising or any other purposes shall automatically terminate this NOA. Failure to comply with any section of this NOA shall be cause for termination and removal of NOA.

ADVERTISEMENT: The NOA number preceded by the words Miami-Dade County, Florida, and followed by the expiration date may be displayed in advertising literature. If any portion of the NOA is displayed, then it shall be done in its entirety.

INSPECTION: A copy of this entire NOA shall be provided to the user by the manufacturer or its distributors and shall be available for inspection at the job site at the request of the Building Official. This NOA consists of this page 1 and evidence pages E-1, E-2 and E-3, as well as approval document mentioned above.

The submitted documentation was reviewed by **Manuel Perez, P.E.**



NOA No. 08-1020.08
Expiration Date: March 4, 2014
Approval Date: March 4, 2009
Page 1

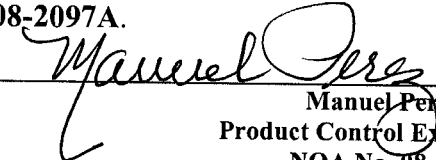
NOTICE OF ACCEPTANCE: EVIDENCE SUBMITTED

A. DRAWINGS

1. Manufacturer's die drawings and sections.
2. Drawing No. **L3200-0801**, Sheets 1 through 7 of 7, titled "Series 3200 Outswing Impact Casement Window", dated 07/27/08, prepared by manufacturer, signed and sealed by Thomas J. Sotos, P.E.

B. TESTS

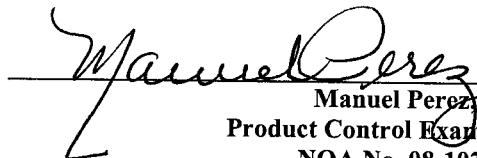
1. Test reports on: 1) Uniform Static Air Pressure Test, Loading per FBC TAS 202-94 along with marked-up drawings and installation diagram of a series 3200 outswing aluminum casement window, X configuration, w/5/16" ann. lami glass w/PVB laminate by DuPont, Test Report No. **HETI-08-2099A**.
2. Test reports on: 1) Large Missile Impact Test per FBC, TAS 201-94
2) Cyclic Wind Pressure Loading per FBC, TAS 203-94 along with marked-up drawings and installation diagram of a series 3200 outswing aluminum casement window, X configuration, w/5/16" ann. lami glass w/PVB laminate by DuPont, Test Report No. **HETI-08-2099B**.
3. Test reports on: 1) Large Missile Impact Test per FBC, TAS 201-94
2) Cyclic Wind Pressure Loading per FBC, TAS 203-94 along with marked-up drawings and installation diagram of a series 3200 outswing aluminum casement window, X configuration, w/5/16" ann. lami glass w/PVB laminate by Solutia, Test Report No. **HETI-08-2100**.
4. Test reports on: 1) Large Missile Impact Test per FBC, TAS 201-94
2) Cyclic Wind Pressure Loading per FBC, TAS 203-94 along with marked-up drawings and installation diagram of a series 3200 outswing aluminum casement window, X configuration, w/5/16" HS lami glass w/PVB laminate by Solutia, Test Report No. **HETI-08-2101**.
5. Test reports on: 1) Uniform Static Air Pressure Test, Loading per FBC TAS 202-94 along with marked-up drawings and installation diagram of a series 3200 outswing aluminum casement window, XX configuration, w/5/16" HS lami glass w/SGP laminate by DuPont, Test Report No. **HETI-08-2102A**.
6. Test reports on: 1) Large Missile Impact Test per FBC, TAS 201-94
2) Cyclic Wind Pressure Loading per FBC, TAS 203-94 along with marked-up drawings and installation diagram of a series 3200 outswing aluminum casement window, XX configuration, w/5/16" HS lami glass w/SGP laminate by DuPont, Test Report No. **HETI-08-2102B**.
7. Test reports on: 1) Uniform Static Air Pressure Test, Loading per FBC TAS 202-94 along with marked-up drawings and installation diagram of a series 3200 outswing aluminum casement window, XX configuration, w/5/16" HS lami glass w/SGP laminate by DuPont, Test Report No. **HETI-08-2097A**.


Manuel Perez, P.E.
Product Control Examiner
NOA No. 08-1020.08

Expiration Date: March 4, 2014
Approval Date: March 4, 2009

NOTICE OF ACCEPTANCE: EVIDENCE SUBMITTED

8. Test reports on: 1) Large Missile Impact Test per FBC, TAS 201-94
2) Cyclic Wind Pressure Loading per FBC, TAS 203-94
along with marked-up drawings and installation diagram of a series 3200 outswing aluminum casement window, XX configuration, w/5/16" HS lami glass w/SGP laminate by DuPont, Test Report No. **HETI-08-2097B**.
9. Test reports on: 1) Uniform Static Air Pressure Test, Loading per FBC TAS 202-94
along with marked-up drawings and installation diagram of a series 3200 outswing aluminum casement window, XX configuration, w/5/16" HS lami glass w/SGP laminate by DuPont, Test Report No. **HETI-08-2103A**.
10. Test reports on: 1) Large Missile Impact Test per FBC, TAS 201-94
2) Cyclic Wind Pressure Loading per FBC, TAS 203-94
along with marked-up drawings and installation diagram of a series 3200 outswing aluminum casement window, XX configuration, w/5/16" HS lami glass w/SGP laminate by DuPont, Test Report No. **HETI-08-2103B**.
11. Test reports on: 1) Large Missile Impact Test per FBC, TAS 201-94
2) Cyclic Wind Pressure Loading per FBC, TAS 203-94
along with marked-up drawings and installation diagram of a series 3200 outswing aluminum casement window, XX configuration, w/5/16" ann. lami glass w/PVB laminate by Solutia, Test Report No. **HETI-08-2104**.
12. Test reports on: 1) Large Missile Impact Test per FBC, TAS 201-94
2) Cyclic Wind Pressure Loading per FBC, TAS 203-94
along with marked-up drawings and installation diagram of a series 3200 outswing aluminum casement window, XX configuration, w/5/16" ann. lami glass w/PVB laminate by Solutia, Test Report No. **HETI-08-2105**.
13. Test reports on: 1) Large Missile Impact Test per FBC, TAS 201-94
2) Cyclic Wind Pressure Loading per FBC, TAS 203-94
along with marked-up drawings and installation diagram of a series 3200 outswing aluminum casement window, XX configuration, w/5/16" HS lami glass w/PVB laminate by Solutia, Test Report No. **HETI-08-2106**.
14. Test reports on: 1) Large Missile Impact Test per FBC, TAS 201-94
2) Cyclic Wind Pressure Loading per FBC, TAS 203-94
along with marked-up drawings and installation diagram of a series 3200 outswing aluminum casement window, XX configuration, w/7/16" ann. lami glass w/PVB laminate by Solutia, Test Report No. **HETI-08-2125**.
15. Test reports on: 1) Uniform Static Air Pressure Test, Loading per FBC TAS 202-94
along with marked-up drawings and installation diagram of a series 3200 outswing aluminum casement window, OX configuration, w/5/16" HS lami glass w/SGP laminate by DuPont, Test Report No. **HETI-08-2131A**.


Manuel Perez, P.E.
Product Control Examiner
NOA No. 08-1020.08
Expiration Date: March 4, 2014
Approval Date: March 4, 2009

Lawson Industries, Inc.

NOTICE OF ACCEPTANCE: EVIDENCE SUBMITTED

16. Test reports on: 1) Large Missile Impact Test per FBC, TAS 201-94
2) Cyclic Wind Pressure Loading per FBC, TAS 203-94
along with marked-up drawings and installation diagram of a series 3200 outswing aluminum casement window, OX configuration, w/5/16" HS lami glass w/SGP laminate by DuPont, Test Report No. **HETI-08-2131B**.

All prepared by Hurricane Engineering & Testing, Inc., dated 07/10/08 and signed and sealed by Candido F. Font, P.E.

C. CALCULATIONS

1. Anchor verification calculations and structural analysis, complying with FBC-2004, prepared by manufacturer, dated 10/01/08 and 01/30/09, signed and sealed by Thomas J. Sotos, P.E.
Complies with ASTM E1300-02

D. QUALITY ASSURANCE

1. Miami Dade Building Code Compliance Office (BCCO).

E. MATERIAL CERTIFICATIONS

1. Notice of Acceptance No. **07-1116.04** issued to **E.I. DuPont De Nemours & Co., Inc.** for their "**DuPont SentryGlas® Plus**" dated 01/03/08, expiring on 01/14/12.
2. Notice of Acceptance No. **05-1208.02** issued to **E.I. DuPont De Nemours & Co., Inc.** for their "**DuPont Butacite PVB Interlayer**" dated 01/05/06, expiring on 12/11/10.
3. Notice of Acceptance No. **06-0216.06** issued to **Solutia, Inc.** for their "**Saflex III G Clear or colored Interlayer**" dated 05/04/06, expiring on 05/21/11.

F. STATEMENTS

1. Statement letter of conformance, dated October 1, 2008, signed and sealed by Thomas J. Sotos, P.E.
2. Statement letter of no financial interest, dated October 1, 2008, signed and sealed by Thomas J. Sotos, P.E.

G. OTHER

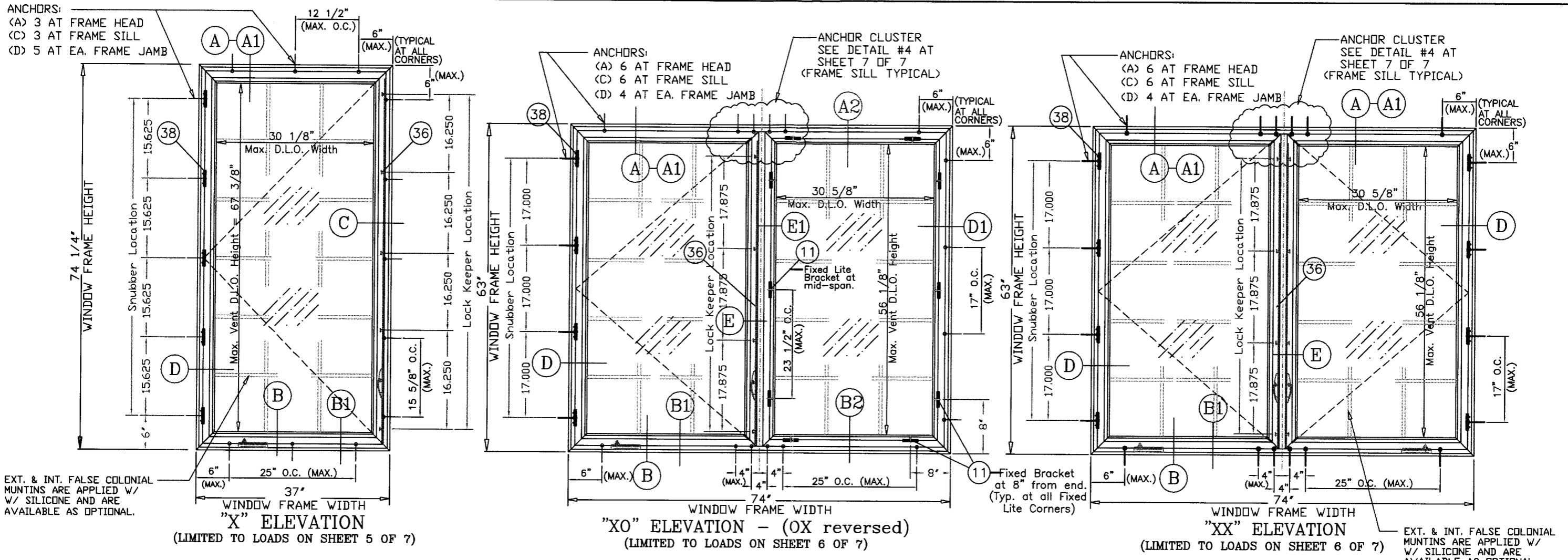
1. None.


Manuel Perez, P.E.
Product Control Examiner

NOA No. 08-1020.08

Expiration Date: March 4, 2014

Approval Date: March 4, 2009



SERIES-3200 OUTSWING CASEMENT IMPACT WINDOW APPROVED ELEVATIONS

General Notes:

- 1.) THIS WINDOW SYSTEM IS DESIGNED AND TESTED TO COMPLY WITH THE REQUIREMENTS OF THE 2004 FLORIDA BUILDING CODE INCLUDING HIGH VELOCITY HURRICANE ZONE (HVHZ) AND ASTM 1300-98. THIS PRODUCT IS IMPACT RESISTANT AND DOES NOT REQUIRE SHUTTERS.
- 2.) 1X or 2 X WOOD BUCKS SHALL BE INSTALLED AND ANCHORED SO THAT THE BUILDING RESISTS THE SUPERIMPOSED LOADS IN ACCORDANCE WITH REQUIREMENTS OF 2004 F.B.C. & TO BE REVIEWED BY BUILDING OFFICIAL.
- 3.) ANCHORS SHOWN ABOVE ARE AS PER TEST UNITS. ON CENTER (O.C.) ANCHOR SPACINGS WILL VARY WITH UNIT DIMENSIONS, AND THE NUMBER OF ANCHORS REQUIRED, AS SPECIFIED ON THE LOAD TABLES AT SHEETS 5 & 6.
- 4.) ANCHOR CONDITIONS NOT DESCRIBED IN THESE DRAWING'S ARE TO BE ENGINEERED ON A SITE SPECIFIC BASIS, UNDER SEPARATE APPROVAL AND TO BE REVIEWED BY BUILDING OFFICIAL.
- 5.) SEE SHEET #3 FOR BILL OF MATERIALS AND DETAILS.
- 6.) SEE SHEET #5 & 6 FOR GLAZING DETAILS & OPTIONS AND CHARTS FOR MAX. DESIGN PRESSURES.
- 7.) WOOD BUCKS IN CONTACT WITH CONCRETE MUST BE PRESSURE TREATED AND ANCHORED (BY OTHERS), PRIOR TO WINDOW INSTALLATION. (SEE SHEET #2 FOR DETAIL & NOTES)
- 8.) MATERIALS INCLUDING BUT NOT LIMITED TO STEEL SCREWS, THAT COME INTO CONTACT WITH OTHER DISSIMILAR MATERIALS SHALL MEET THE REQUIREMENTS OF 2004 FLORIDA BUILDING CODE SECTION 2003.8.4 AND/OR SECTION 2326.2
- 9.) EXT. & INT. FALSE COLONIAL MUNTINS ARE OPTIONAL & AND ARE APPLIED W/ SILICONE
- 10.) FRAME SILL ANCHOR CLIPS TO BE MEASURED FROM THE INSIDE EDGE OF THE WINDOW FRAME AND TO BE LOCATED WITHIN A +/- 1/2" TOLERANCE. TOTAL OF ANCHORS REQUIRED AT SILL TO BE THE SAME AS FRAME HEAD.
- 11.) SEE SHEET # 4 OF 10 FOR FLANGE PERIMETER CAULK/ INSTALLATION DETAIL.
- 12.) EXT. & INT. FALSE COLONIAL MUNTINS ARE OPTIONAL & AND ARE APPLIED W/ SILICONE

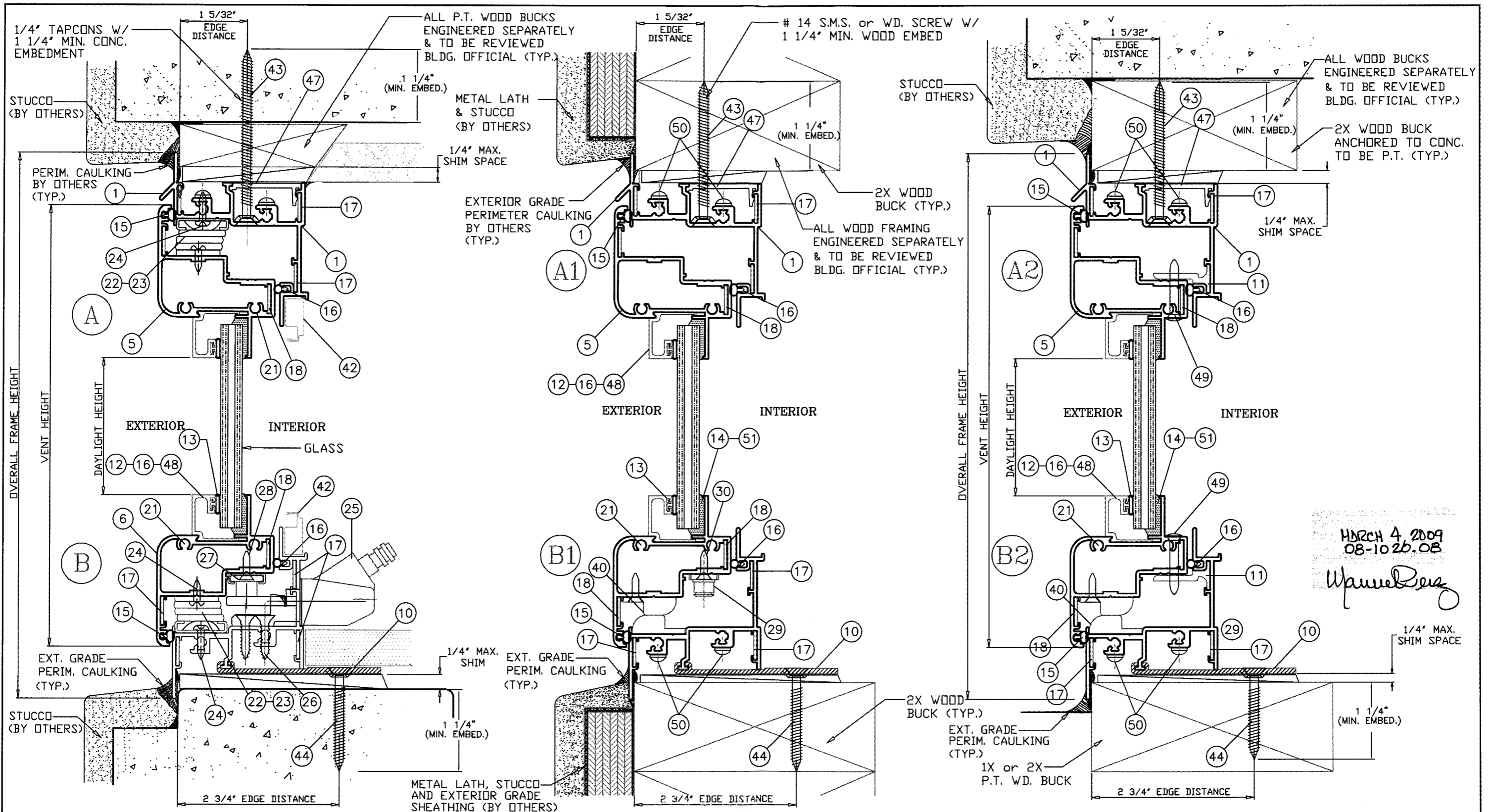
• WHEN THE GAP BETWEEN THE WINDOW FRAME AND THE BUCK OR MASONRY IS LESS THAN 1/8", SHIMS ARE NOT REQUIRED.

ANCHORS NOTE:
 ANCHORS TO BE #12 SMS OR W.D. SCREWS INTO WOOD, OR 1/4" TAPCONS OR APPROVED CONC. FASTENERS INTO CONC., WITH A MINIMUM OF 1 1/4" PENETRATION INTO WOOD OR CONC. (REFER TO LOAD TABLES FOR QUANTITIES REQUIRED)

Approved as complying with the Florida Building Code
 Date: March 4, 2009
 NOA#: 08-1020-08
 Manual Made Permitted Control
[Signature]

THOMAS J. SOTOS
 PROFESSIONAL ENGINEER
 FL LIC. # 55225
[Signature]
 DATE _____

Revision Notes:		LAWSON INDUSTRIES, INC.		8501 N.W. 90 ST. MEDLEY, FLORIDA 33166 PH No. (305) 696-8660	
		<small>MANUFACTURER OF QUALITY ALUMINUM WINDOWS AND GLASS DOORS</small>			
Drawn By:	N. ERAZO	Date Drawn:	07/27/08	Product Reference Number:	CASEMENT3200-08NOA-01
Revised By:		Date Revised:		Series/Model:	3200
Revision Level:		Scale:		Item Reference #:	LCNOA 08-01
		Series: 3200 Outswing Impact Casement Window GENERAL NOTES & APPROVED ELEVATIONS (X, XX, XO or OX)			
		Drawing Number:		Sheet:	
		L3200-0801		1 OF 7	



* WHEN THE GAP BETWEEN THE WINDOW FRAME AND THE BUCK OR MASONRY IS LESS THAN 1/8", SHIMS ARE NOT REQUIRED.

ANCHORS NOTE:
 ANCHORS TO BE #12 SMS OR WD. SCREWS INTO WOOD, OR 1/4" TAPCONS OR APPROVED CONC. FASTENERS INTO CONC., WITH A MINIMUM OF 1 1/4" PENETRATION INTO WOOD OR CONC. (REFER TO LOAD TABLES FOR QUANTITIES REQUIRED)

THOMAS J. SOTOS
 PROFESSIONAL ENGINEER
 FL LIC. # 55225

[Signature]

DATE _____

Revision Notes:	
Drawn By:	Date Drawn:
Revised By:	Date Revised:
Revision Level:	Scale:

LAWSON INDUSTRIES, INC.

8501 N.W. 90 ST.
 MEDLEY, FLORIDA 33166
 PH No. (305) 696-8660

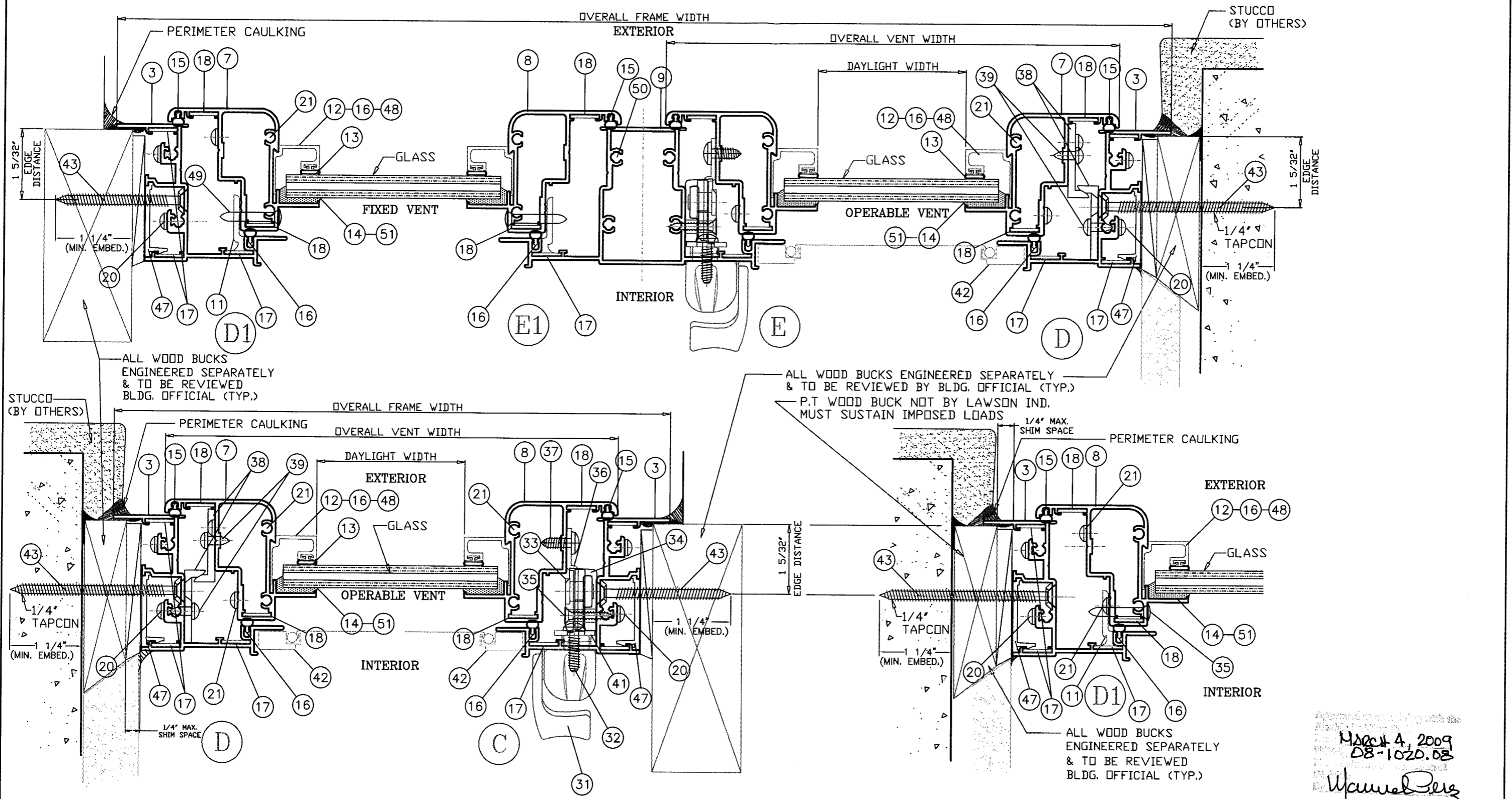
MANUFACTURER OF QUALITY ALUMINUM WINDOWS AND GLASS DOORS

Draw Class:	Part Class:	Prod Category:	Series/Model:	Item Reference #:	Revision #:
NOA	ASSEMBLY	WINDOW	3200	LCNOA 08-01	

Series: 3200 Outswing Impact Casement Window
 VERTICAL CROSS-SECTIONS, DETAILS & NOTES

Product Reference Number:	Drawing Number:	Sheet:
CASEMENT3200-08NOA-01	L3200-0801	2 OF 7

MARCH 4 2009
 08-102b.08
[Signature]



* WHEN THE GAP BETWEEN THE WINDOW FRAME AND THE BUCK OR MASONRY IS LESS THAN 1/8", SHIMS ARE NOT REQUIRED.

ANCHORS NOTE:
 ANCHORS TO BE #12 SMS OR WD. SCREWS INTO WOOD, OR 1/4" TAPCONS OR APPROVED CONC. FASTENERS INTO CONC., WITH A MINIMUM OF 1 1/4" PENETRATION INTO WOOD OR CONC. (REFER TO LOAD TABLES FOR QUANTITIES REQUIRED)

THOMAS J. SOTOS
 PROFESSIONAL ENGINEER
 FL LIC. # 55225

DATE _____

Revision Notes:	
Drawn By:	Date Drawn:
Revised By:	Date Revised:
Revision Level:	Scale:

LAWSON INDUSTRIES, INC.
 MANUFACTURER OF QUALITY ALUMINUM WINDOWS AND GLASS DOORS

8501 N.W. 90 ST.
 MEDLEY, FLORIDA 33166
 PH No. (305) 696-8660

Draw Class:	Part Class:	Prod Category:	Series/Model:	Item Reference #:	Revision #:
NOA	ASSEMBLY	WINDOW	3200	LCNOA 08-01	

Series: 3200 Outswing Impact Casement Window
 HORIZONTAL CROSS-SECTIONS, DETAILS & NOTES

Product Reference Number:	Drawing Number:	Sheet:
CASEMENT3200-08NOA-01	L3200-0801	3 OF 7

Approved on 08/27/08 with the
 MSpec 4, 2009
 08-1020.08
 Wmuel Berg

LAWSON SERIES: 3200 CASEMENT WINDOW - BILL OF MATERIALS LIST

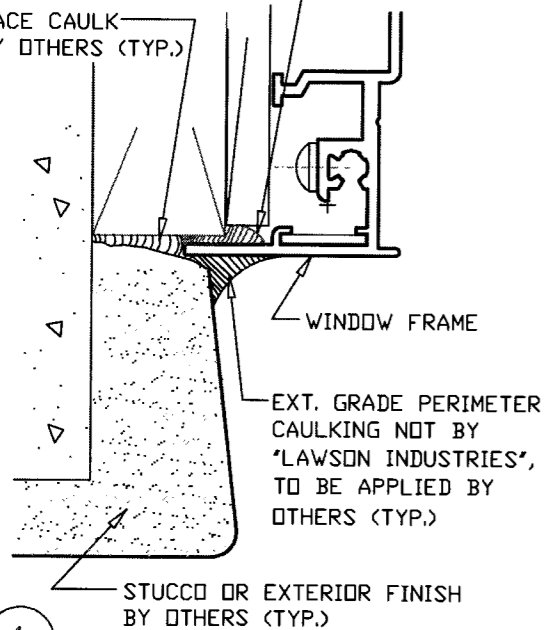
ITEM #	DWG. NO.	PART NO.	QUANTITY	DESCRIPTION	REMARKS
40			1 X VENT	ANTI SAG VENT/SILL RAMP	NYLON 6/6
41			1 X HANDLE	LOCKING HANDLE BACK PLATE	*
42			1 X VENT	5/16" INSECT SCREEN - OPTIONAL	ALUMINUM FRAME
43			SEE ELEVATION	FRAME INSTALLATION SCREWS	#12 X 2 1/4" PH SMS
44			SEE ELEVATION	FRAME SILL CLIP SCREWS	#12 X 1 1/2" PH SMS
45		SM-5504	SEE ELEVATION	FRAME/VENT ASSEMBLY SEALANT	*
46			SEE ELEVATION	FRAME INSTALLATION CAULKING	EXTERIOR GRADE PERIMETER
47	L-3007	LII-164	1 X ANCHOR	FRAME HEAD/JAMB SHEAR PLATE	6063-T5 ALUMINUM (3" L.)
48	L-3009	LI1-159	AS REQD.	GLAZING BEAD - 7/16"	6063-T5 ALUMINUM
49			2 X BRACKET	FIXED VENT ATTACHMENT SCREW	#8 X 1 1/4" FH./PHIL. SDS
50			8 X POST	IN-POST ASSEMBLY SCREWS	#10 X 1 1/4" PH SMS
51		DC-899	AS REQD.	GLAZING SEALANT - SILICONE	*

LAWSON SERIES: 3200 CASEMENT WINDOW - BILL OF MATERIALS LIST

ITEM #	DWG. NO.	PART NO.	QUANTITY	DESCRIPTION	REMARKS
1	L-3001	LII-118	1	FRAME HEAD	6063-T6 ALUMINUM
2	L-3002	LII-115	1	FRAME SILL	6063-T6 ALUMINUM
3	L-3002	LII-115	2	FRAME JAMB-HINGE SIDE	6063-T6 ALUMINUM
4	L-3002	LII-115	2	FRAME JAMB-LATCH SIDE	6063-T6 ALUMINUM
5	L-3004	LII-119	2	VENT TOP RAIL	6063-T6 ALUMINUM
6	L-3004	LII-119	2	VENT BOTTOM RAIL	6063-T6 ALUMINUM
7	L-3004	LII-119	2	VENT SIDE RAIL-HINGE SIDE	6063-T6 ALUMINUM
8	L-3004	LII-119	2	VENT SIDE RAIL-LATCH SIDE	6063-T6 ALUMINUM
9	L-3003	LII-116	AS REQ'D.	IN-POST	6063-T6 ALUMINUM
10	L-3006	LII-111	1 X ANCHOR	FRAME SILL ANCHOR CLIP	6063-T6 ALUMINUM (3" L.)
11	L-3005	LII-113	AS REQ'D.	FIXED LITE MOUNTING BRACKET	6063-T6 ALUMINUM (3" L.)
12	L-3010	LI1-7708	AS REQD.	GLAZING BEAD - 5/16"	6063-T5 ALUMINUM
13	L-7531	L-7531	AS REQD.	GLAZING BEAD BULB VINYL	PVC VINYL
14		SM-5731	AS REQD.	GLAZING SEALANT - SILICONE	*
15	L-3012	LI-110	AS REQD.	WEATHERSTRIPPING - FRAME/VENT	PVC VINYL
16	L-3011	LII-133	AS REQ'D.	GLAZING BEAD 11/16" LAM./INSUL.	6063-T5 ALUMINUM
17	L-3013		12	CORNER KEY PER FRAME	*
18	L-3013		8	CORNER KEY PER VENT	*
19	L-3013		4 X POST	CORNER KEY PER IN-POST	*
20			8	FRAME ASSEMBLY SCREWS	#10 X 1" PH SMS
21			8	VENT ASSEMBLY SCREWS	#10 X 1 1/4" PH SMS
22			2 X VENT	4 BAR 90° HINGES - STD. & H.D.	*
23			2 X VENT	4 BAR 45° HINGES - STD. & H.D.	*
24			AS REQD.	HINGE MOUNTING SCREWS	#10 X 1/2" P.H./PHIL. B
25			1 X VENT	VENT OPERATOR - DUAL or SINGLE	*
26			4/ OPER.	OPERATOR MOUNTING SCREWS	#10 X 3/4" F.H./PHIL. SDS
27			1/ OPER.	STAINLESS STEEL "C" TRACK	*
28			2/ TRACK	TRACK MOUNTING SCREWS	#8 X 1/2" F.H./PHIL. SDS
29			1/ OPERATOR	STUD BRACKET CONNECTOR	*
30			2/ BRACKET	STUD BRACKET SCREWS	#8 X 1/2" F.H./PHIL. SDS
31			1/ VENT	LOCKING HANDLE	*
32			2/ LOCK	LOCK HANDLE MOUNTING SCREWS	#10-32 X 3/8" PH MS
33			1/ VENT	LOCKING MULTI-POINT BAR	*
34			1 X LOCK POINT	TIE BAR NYLON GUIDES	*
35			2 X GUIDE	NYLON GUIDES MOUNTING SCREWS	#8 X 1" PH./PHIL. B
36			1/ LOCK	KEEPER (ST. STEEL)	*
37			2/ KEEPER	KEEPER MOUNTING SCREWS	
38	L-3014		4	SNUBBER	6063-T5 ALUMINUM
39			2/ SNUBBER	SNUBBER INSTALLATION SCREWS	#8 X 1/2" PH SMS

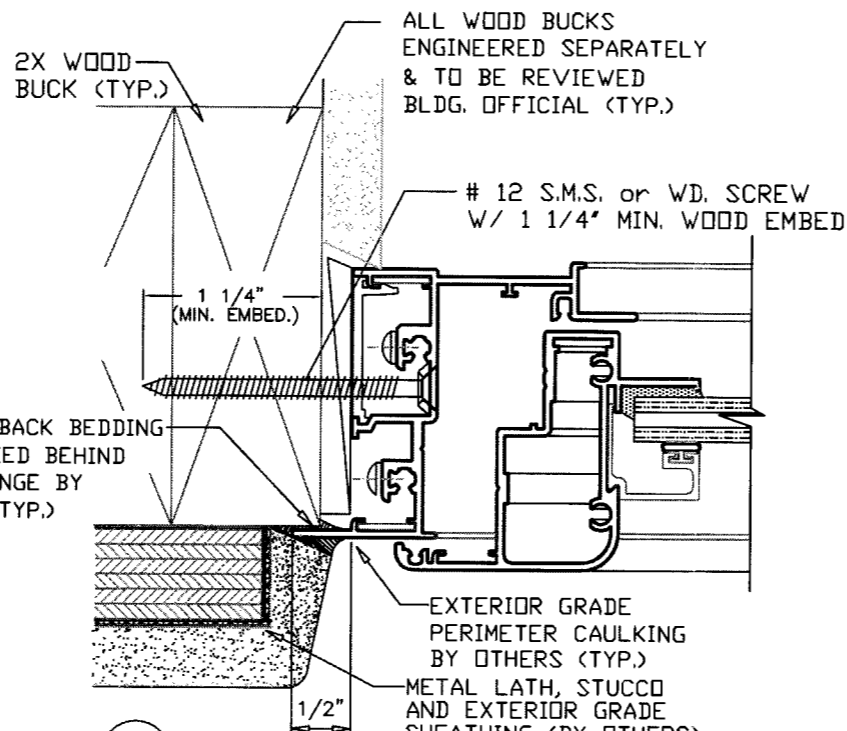
EXT. GRADE BACK BEDDING TO BE APPLIED BEHIND WINDOW FLANGE BY INSTALLER (TYP.)

FACE CAULK BY OTHERS (TYP.)



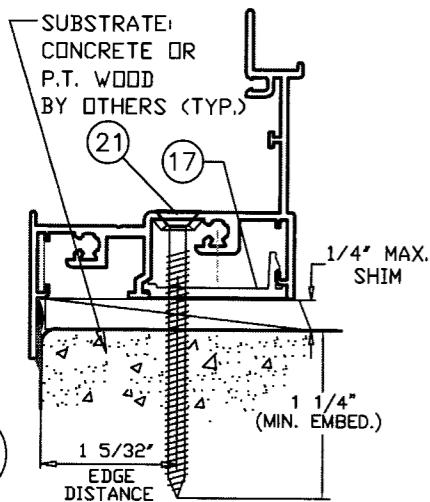
1

FRAME PERIMETER CAULK DETAIL



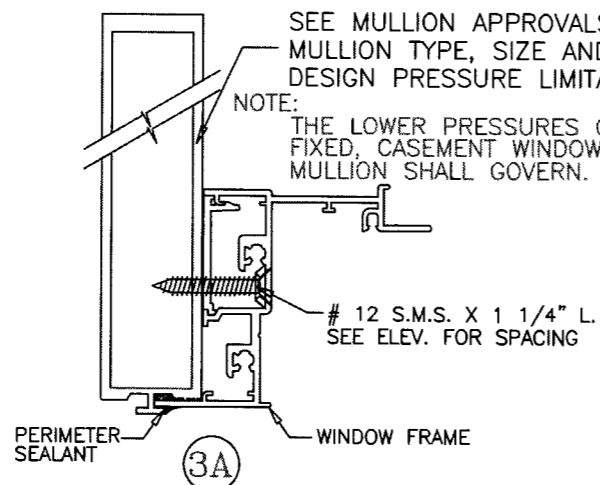
2

WOOD FRAME INSTALLATION DETAIL



B

ALTERNATE ANCHORING AT SILL



3A

MULLION ATTACHMENT DETAIL

MARCH 4, 2009
08-1020.08

Manuel Berg

THOMAS J. SOTOE
PROFESSIONAL ENGINEER
FL LIC. # 55225

DATE _____

Revision Notes:	
Drawn By:	Date Drawn:
Reviewed By:	Date Revised:
Revision Level:	Scale:

LAWSON INDUSTRIES, INC.

8501 N.W. 90 ST.
MEDLEY, FLORIDA 33166
PH No. (305) 696-8660

MANUFACTURER OF QUALITY ALUMINUM WINDOWS AND GLASS DOORS

Draw Class:	Part Class:	Prod Category:	Series/Model:	Item Reference #:	Revision #:
NOA	ASSEMBLY	WINDOW	3200	LCNOA 08-01	

Series: 3200 Outswing Impact Casement Window

BILL OF MATERIALS LIST AND DETAILS

Product Reference Number:	Drawing Number:	Sheet:
CASEMENT3200-08NOA-01	L3200-0801	4 OF 7

5/16" LAMINATED GLASS COMPOSITION - TYPE "A"		
ITEM	DESCRIPTION	DETAIL
1	1/8" ANNEALED GLASS	
2	0.090" PVB INTERLAYER DUPONT OR Solutia	
3	1/8" ANNEALED GLASS	

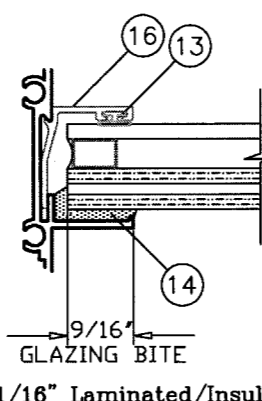
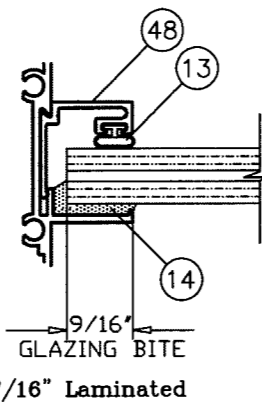
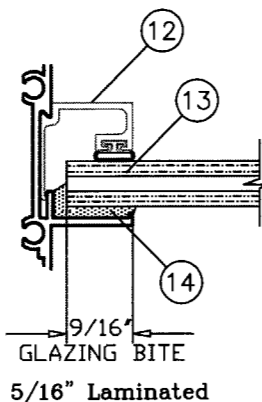
5/16" LAMINATED GLASS COMPOSITION - TYPE "B"		
ITEM	DESCRIPTION	DETAIL
1	1/8" HEAT-STRENGTHENED GLASS	
2	0.090" PVB INTERLAYER Solutia	
3	1/8" HEAT-STRENGTHENED GLASS	

5/16" LAMINATED GLASS COMPOSITION - TYPE "C"		
ITEM	DESCRIPTION	DETAIL
1	1/8" HEAT-STRENGTHENED GLASS	
2	0.090" SGP INTERLAYER DUPONT	
3	1/8" HEAT-STRENGTHENED GLASS	

7/16" LAMINATED GLASS COMPOSITION - TYPE "D"		
ITEM	DESCRIPTION	DETAIL
1	3/16" ANNEALED GLASS	
2	0.090" PVB INTERLAYER Solutia	
3	3/16" ANNEALED GLASS	

11/16" LAMINATED GLASS COMPOSITION TYPE "E"		
ITEM	DESCRIPTION	DETAIL
1	1/8" ANNEALED GLASS	
2	0.090" PVB INTERLAYER Solutia	
3	1/8" ANNEALED GLASS	
4	1/4" INSULATED AIR SPACE	
5	1/8" ANNEALED GLASS	

LAMINATED GLASS TYPES



GLAZING OPTION DETAILS

					Flange Frame Window Glazed with									
3200 Impact Casement Window					Glass Type "A"		Glass Type "B"		Glass Type "C"		Glass Type "D"		Glass Type "E"	
Configuration: "X"					5/16" Annealed Glass		5/16" H.S. Glass - PVB		5/16" H.S. Glass -SGP		7/16" Annealed Glass		11/16" Annealed Glass	
Size Code	Width (in)	Height (in)	Anchors		DP(+) psf	DP(-) psf	DP(+) psf	DP(-) psf	DP(+) psf	DP(-) psf	DP(+) psf	DP(-) psf	DP(+) psf	DP(-) psf
			Head/Sill	Jamb										
12	19.125	26	2	2	59.0	59.0	70.0	82.0	70.0	82.0	70.0	73.0	70.0	73.0
13	19.125	38.375	2	3	59.0	59.0	70.0	82.0	70.0	82.0	70.0	73.0	70.0	73.0
14	19.125	50.625	2	4	59.0	59.0	70.0	82.0	70.0	82.0	70.0	73.0	70.0	73.0
15	19.125	63	2	5	59.0	59.0	70.0	82.0	70.0	82.0	70.0	73.0	70.0	73.0
16	19.125	74.25	2	5	59.0	59.0	70.0	82.0	70.0	82.0	70.0	73.0	70.0	73.0
H32	26.5	26	3	2	59.0	59.0	70.0	82.0	70.0	82.0	70.0	73.0	70.0	73.0
H33	26.5	38.375	3	3	59.0	59.0	70.0	82.0	70.0	82.0	70.0	73.0	70.0	73.0
H34	26.5	50.625	3	4	59.0	59.0	70.0	82.0	70.0	82.0	70.0	73.0	70.0	73.0
H35	26.5	63	3	5	59.0	59.0	70.0	82.0	70.0	82.0	70.0	73.0	70.0	73.0
H36	26.5	74.25	3	5	59.0	59.0	70.0	82.0	70.0	82.0	70.0	73.0	70.0	73.0
22	37	26	3	2	59.0	59.0	70.0	82.0	70.0	82.0	70.0	73.0	70.0	73.0
23	37	38.375	3	3	59.0	59.0	70.0	82.0	70.0	82.0	70.0	73.0	70.0	73.0
24	37	50.625	3	4	59.0	59.0	70.0	82.0	70.0	82.0	70.0	73.0	70.0	73.0
25	37	63	3	5	59.0	59.0	70.0	82.0	70.0	82.0	70.0	73.0	70.0	73.0
26	37	74.25	3	5	59.0	59.0	70.0	82.0	-	-	-	-	-	-
2020	24	24	2	2	59.0	59.0	70.0	82.0	70.0	82.0	70.0	73.0	70.0	73.0
2030	24	36	2	3	59.0	59.0	70.0	82.0	70.0	82.0	70.0	73.0	70.0	73.0
2040	24	48	2	4	59.0	59.0	70.0	82.0	70.0	82.0	70.0	73.0	70.0	73.0
2050	24	60	2	5	59.0	59.0	70.0	82.0	70.0	82.0	70.0	73.0	70.0	73.0
2060	24	72	2	5	59.0	59.0	70.0	82.0	70.0	82.0	70.0	73.0	70.0	73.0
2620	30	24	3	2	59.0	59.0	70.0	82.0	70.0	82.0	70.0	73.0	70.0	73.0
2630	30	36	3	3	59.0	59.0	70.0	82.0	70.0	82.0	70.0	73.0	70.0	73.0
2640	30	48	3	4	59.0	59.0	70.0	82.0	70.0	82.0	70.0	73.0	70.0	73.0
2650	30	60	3	5	59.0	59.0	70.0	82.0	70.0	82.0	70.0	73.0	70.0	73.0
2660	30	72	3	5	59.0	59.0	70.0	82.0	70.0	82.0	70.0	73.0	70.0	73.0
2820	32	24	3	2	59.0	59.0	70.0	82.0	70.0	82.0	70.0	73.0	70.0	73.0
2830	32	36	3	3	59.0	59.0	70.0	82.0	70.0	82.0	70.0	73.0	70.0	73.0
2840	32	48	3	4	59.0	59.0	70.0	82.0	70.0	82.0	70.0	73.0	70.0	73.0
2850	32	60	3	5	59.0	59.0	70.0	82.0	70.0	82.0	70.0	73.0	70.0	73.0
2860	32	72	3	5	59.0	59.0	70.0	82.0	70.0	82.0	70.0	73.0	70.0	73.0
3020	36	24	3	2	59.0	59.0	70.0	82.0	70.0	82.0	70.0	73.0	70.0	73.0
3030	36	36	3	3	59.0	59.0	70.0	82.0	70.0	82.0	70.0	73.0	70.0	73.0
3040	36	48	3	4	59.0	59.0	70.0	82.0	70.0	82.0	70.0	73.0	70.0	73.0
3050	36	60	3	5	59.0	59.0	70.0	82.0	70.0	82.0	70.0	73.0	70.0	73.0
3060	36	72	3	5	59.0	59.0	70.0	82.0	-	-	-	-	-	-

COMMODITY SIZES

MODULAR SIZES

THOMAS J. SOTOS
PROFESSIONAL ENGINEER
FL LIC. # 55225

DATE _____

Revision Notes:

Drawn By: N. ERAZO Date Drawn: 07/27/08

Revised By: Date Revised:

Revision Level: Scale:

LAWSON
INDUSTRIES, INC.

8501 N.W. 90 ST.
MEDLEY, FLORIDA 33166
PH No. (305) 696-8660

MANUFACTURER OF QUALITY ALUMINUM WINDOWS AND GLASS DOORS

Draw Class: NOA Part Class: ASSEMBLY Prod Category: WINDOW Series/Model: 3200 Item Reference #: LCNOA 08-01 Revision #:

Series: 3200 Outswing Impact Casement Window
GLASS & DP CHARTS AND GLAZING DETAILS FOR "X" UNITS

Product Reference Number: CASEMENT3200-08NOA-01 Drawing Number: L3200-0801 Sheet: 5 OF 7

MDR 4, 2009
08-10-2008

Manuel Perez

5/16" LAMINATED GLASS COMPOSITION - TYPE "A"		
ITEM	DESCRIPTION	DETAIL
1	1/8" ANNEALED GLASS	
2	0.090" PVB INTERLAYER DUPONT	
3	1/8" ANNEALED GLASS	

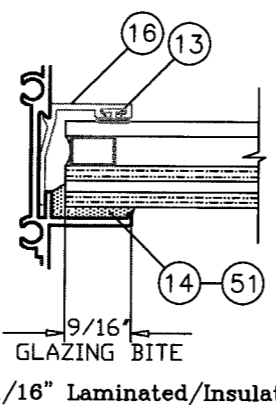
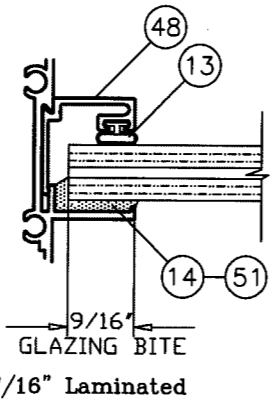
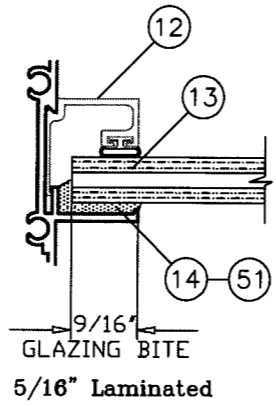
5/16" LAMINATED GLASS COMPOSITION - TYPE "B"		
ITEM	DESCRIPTION	DETAIL
1	1/8" HEAT-STRENGTHENED GLASS	
2	0.090" PVB INTERLAYER SOLUTIA	
3	1/8" HEAT-STRENGTHENED GLASS	

5/16" LAMINATED GLASS COMPOSITION - TYPE "C"		
ITEM	DESCRIPTION	DETAIL
1	1/8" HEAT-STRENGTHENED GLASS	
2	0.090" SGP INTERLAYER DUPONT	
3	1/8" HEAT-STRENGTHENED GLASS	

7/16" LAMINATED GLASS COMPOSITION - TYPE "D"		
ITEM	DESCRIPTION	DETAIL
1	3/16" ANNEALED GLASS	
2	0.090" PVB INTERLAYER SOLUTIA	
3	3/16" ANNEALED GLASS	

11/16" LAMINATED GLASS COMPOSITION TYPE "E"		
ITEM	DESCRIPTION	DETAIL
1	1/8" ANNEALED GLASS	
2	0.090" PVB INTERLAYER SOLUTIA	
3	1/8" ANNEALED GLASS	
4	1/4" INSULATED AIR SPACE	
5	1/8" ANNEALED GLASS	

LAMINATED GLASS TYPES



GLAZING OPTION DETAILS

					Flange Frame Window Glazed with									
3200 Impact Casement Window Configuration: "XX", "XO" or "OX"					Glass Type "A"		Glass Type "B"		Glass Type "C"		Glass Type "D"		Glass Type "E"	
					5/16" Annealed Glass		5/16" H.S. Glass - PVB		5/16" H.S. Glass -SGP		7/16" Annealed Glass		11/16" Annealed Glass	
COMMODITY SIZES	Size Code	Width (in)	Height (in)	Anchors	DP(+)	DP(-)	DP(+)	DP(-)	DP(+)	DP(-)	DP(+)	DP(-)	DP(+)	DP(-)
				Head/Sill Jamb	psf	psf	psf	psf	psf	psf	psf	psf	psf	psf
	22	37	26	4 2	70.0	70.0	70.0	73.0	70.0	82.0	70.0	73.0	70.0	73.0
	23	37	38.375	4 3	70.0	70.0	70.0	73.0	70.0	82.0	70.0	73.0	70.0	73.0
	24	37	50.625	4 4	70.0	70.0	70.0	73.0	70.0	82.0	70.0	73.0	70.0	73.0
	25	37	63	4 4	70.0	70.0	70.0	73.0	70.0	82.0	70.0	73.0	70.0	73.0
	32	53.125	26	4 2	70.0	70.0	70.0	73.0	70.0	82.0	70.0	73.0	70.0	73.0
	33	53.125	38.375	4 3	70.0	70.0	70.0	73.0	70.0	82.0	70.0	73.0	70.0	73.0
	34	53.125	50.625	4 4	70.0	70.0	70.0	73.0	70.0	82.0	70.0	73.0	70.0	73.0
	35	53.125	63	4 4	70.0	70.0	70.0	73.0	70.0	82.0	70.0	73.0	70.0	73.0
	D22	74	26	6 2	70.0	70.0	70.0	73.0	70.0	82.0	70.0	73.0	70.0	73.0
	D23	74	38.375	6 3	70.0	70.0	70.0	73.0	70.0	82.0	70.0	73.0	70.0	73.0
	D24	74	50.625	6 4	70.0	70.0	70.0	73.0	70.0	82.0	70.0	73.0	70.0	73.0
	D25	74	63	6 4	70.0	70.0	70.0	73.0	70.0	82.0	70.0	73.0	70.0	73.0
	3020	36	24	4 2	70.0	70.0	70.0	73.0	70.0	82.0	70.0	73.0	70.0	73.0
	3030	36	36	4 3	70.0	70.0	70.0	73.0	70.0	82.0	70.0	73.0	70.0	73.0
	3040	36	48	4 4	70.0	70.0	70.0	73.0	70.0	82.0	70.0	73.0	70.0	73.0
	3050	36	60	4 4	70.0	70.0	70.0	73.0	70.0	82.0	70.0	73.0	70.0	73.0
	4020	48	24	4 2	70.0	70.0	70.0	73.0	70.0	82.0	70.0	73.0	70.0	73.0
	4030	48	36	4 3	70.0	70.0	70.0	73.0	70.0	82.0	70.0	73.0	70.0	73.0
	4040	48	48	4 4	70.0	70.0	70.0	73.0	70.0	82.0	70.0	73.0	70.0	73.0
	4050	48	60	4 4	70.0	70.0	70.0	73.0	70.0	82.0	70.0	73.0	70.0	73.0
	5020	60	24	5 2	70.0	70.0	70.0	73.0	70.0	82.0	70.0	73.0	70.0	73.0
	5030	60	36	5 3	70.0	70.0	70.0	73.0	70.0	82.0	70.0	73.0	70.0	73.0
	5040	60	48	5 4	70.0	70.0	70.0	73.0	70.0	82.0	70.0	73.0	70.0	73.0
	5050	60	60	5 4	70.0	70.0	70.0	73.0	70.0	82.0	70.0	73.0	70.0	73.0
	6020	72	24	6 2	70.0	70.0	70.0	73.0	70.0	82.0	70.0	73.0	70.0	73.0
	6030	72	36	6 3	70.0	70.0	70.0	73.0	70.0	82.0	70.0	73.0	70.0	73.0
	6040	72	48	6 4	70.0	70.0	70.0	73.0	70.0	82.0	70.0	73.0	70.0	73.0
	6050	72	60	6 4	70.0	70.0	70.0	73.0	70.0	82.0	70.0	73.0	70.0	73.0

MODULAR SIZES

THOMAS J. SOTO
PROFESSIONAL ENGINEER
FL LIC. # 55225

[Signature]

DATE: _____

Revision Notes:

Drawn By: N. ERAZO Date Drawn: 07/27/08

Revised By: Date Revised:

Revision Level: Scale:

LAWSON INDUSTRIES, INC.

MANUFACTURER OF QUALITY ALUMINUM WINDOWS AND GLASS DOORS

8501 N.W. 90 ST. MEDLEY, FLORIDA 33166 PH No. (305) 696-8660

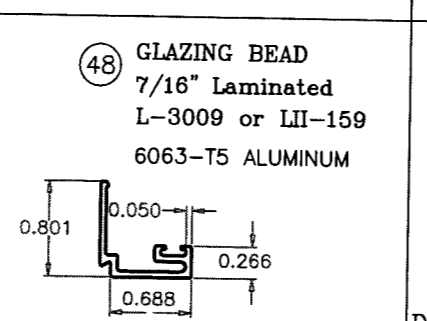
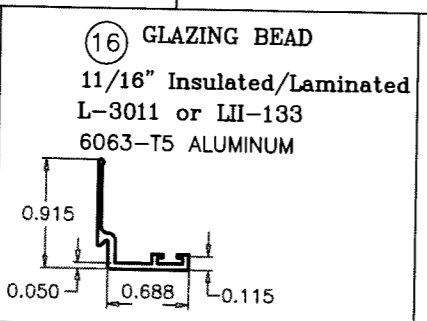
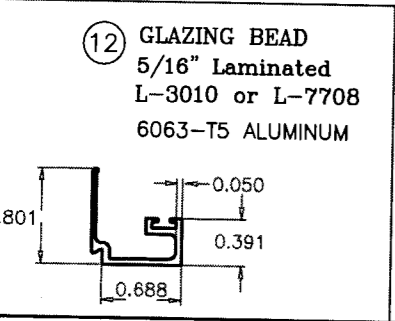
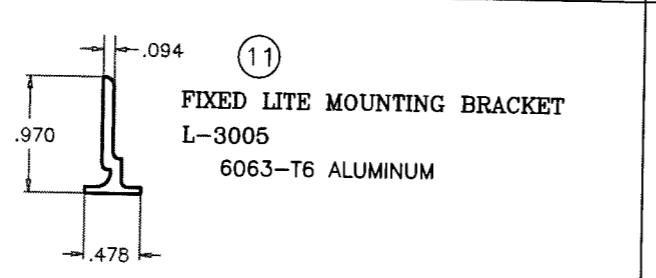
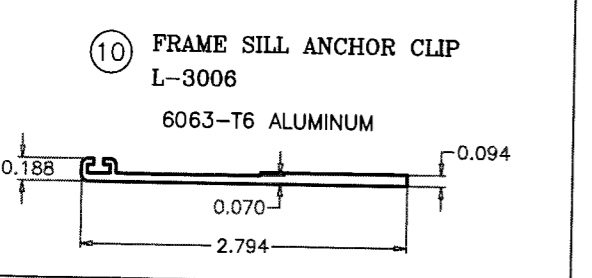
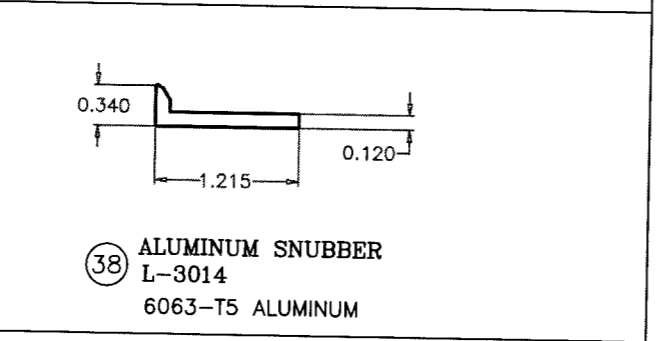
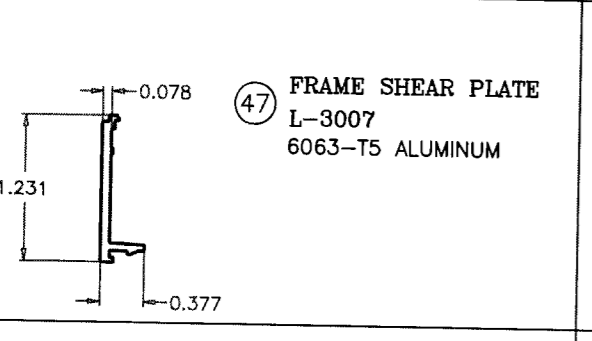
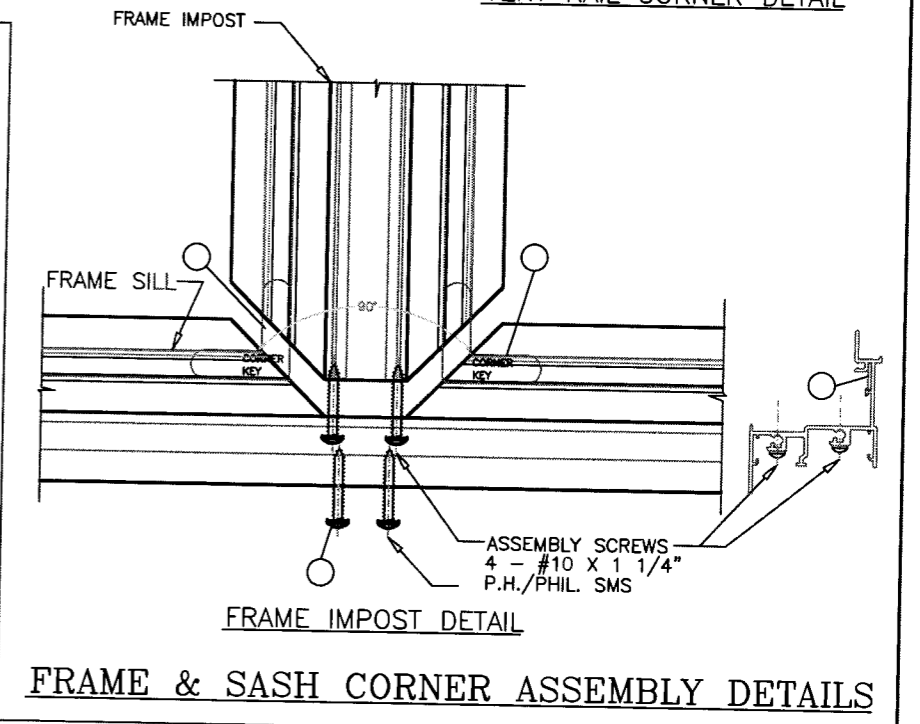
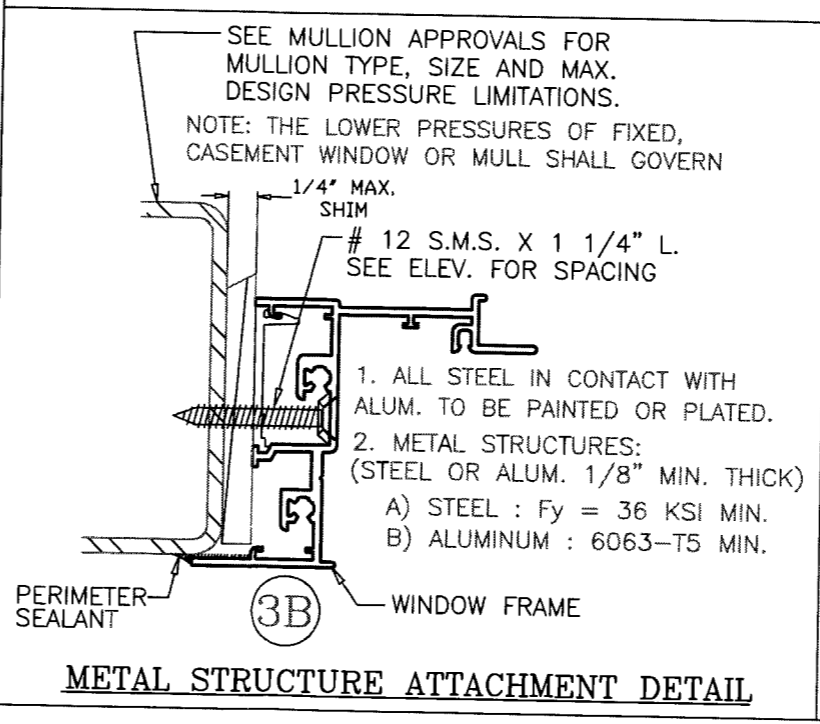
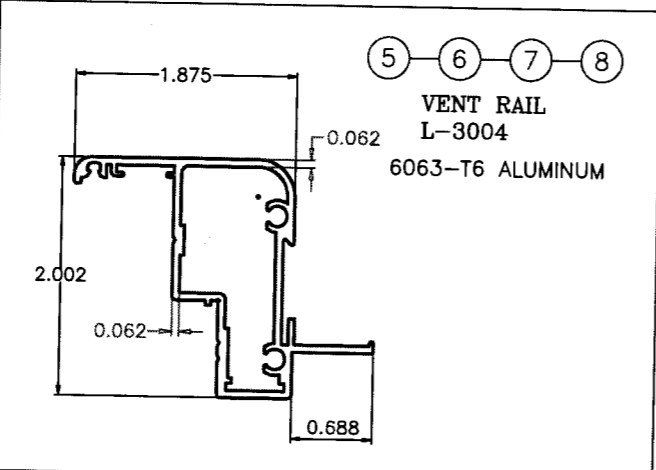
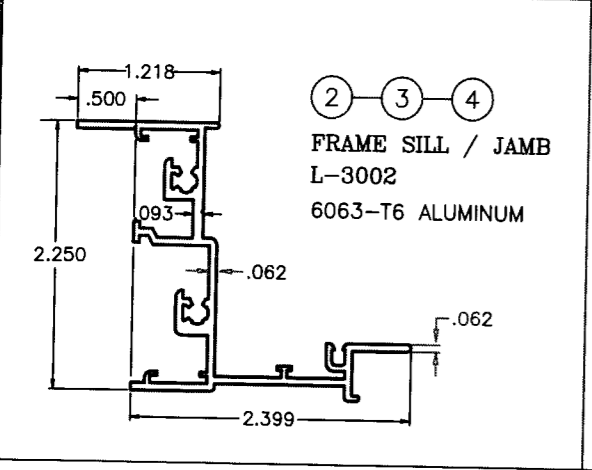
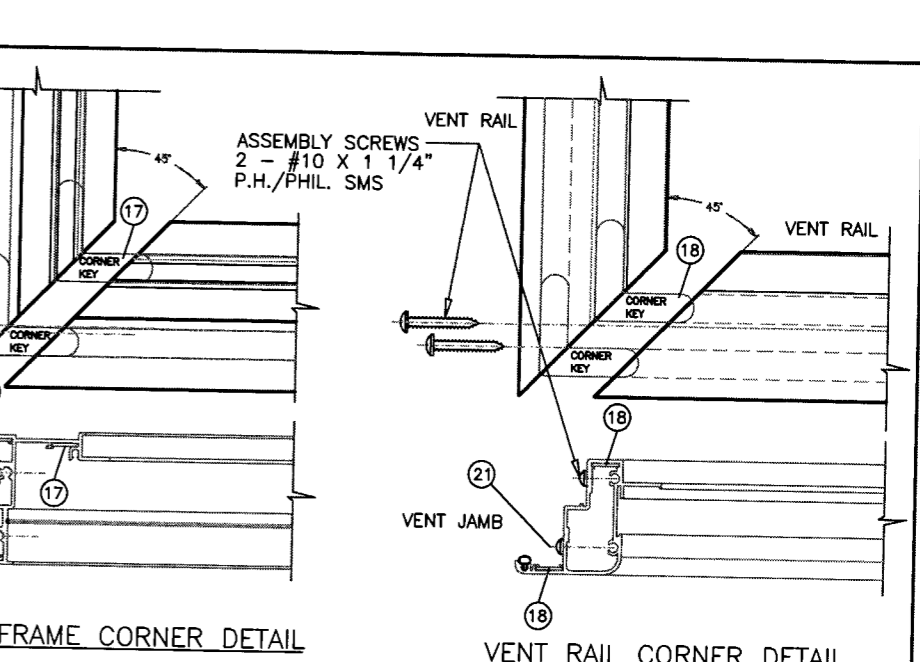
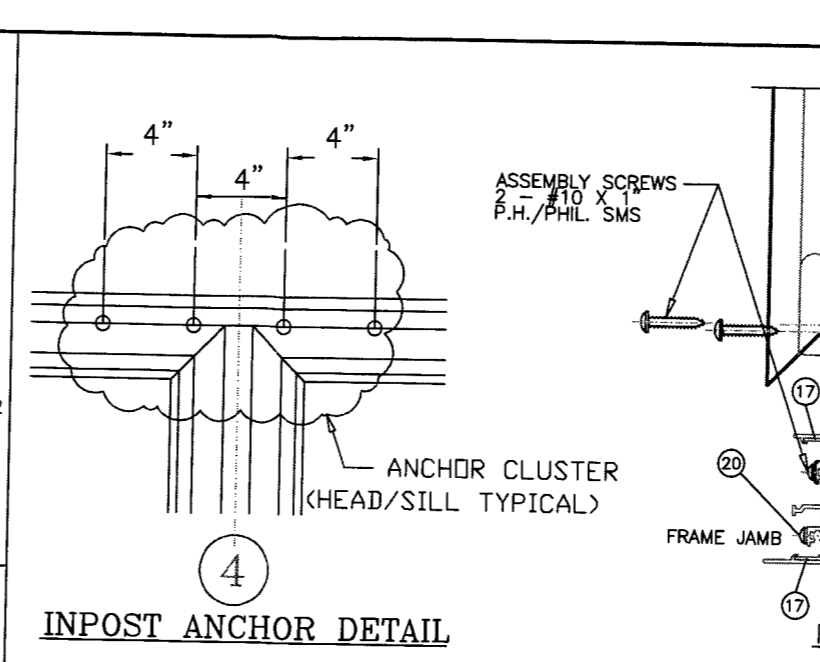
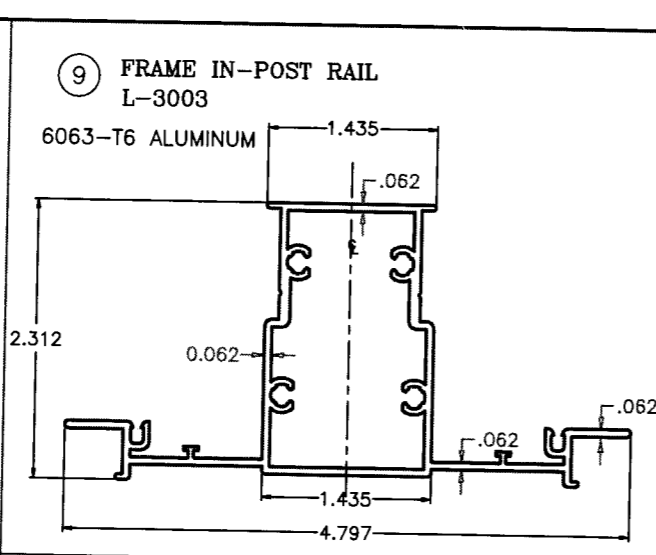
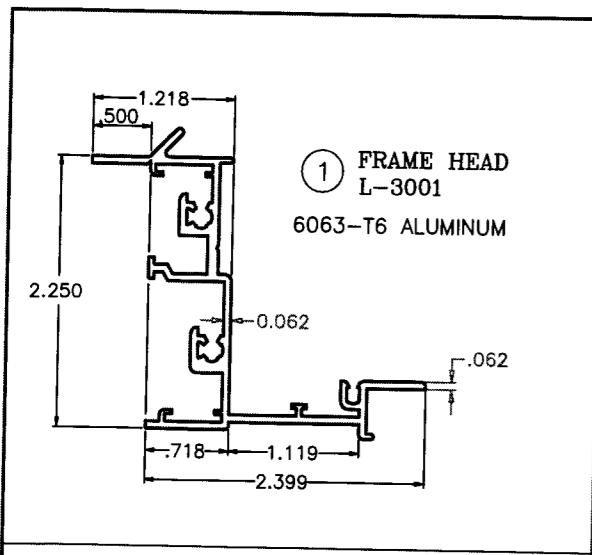
Draw Class: NOA Part Class: ASSEMBLY Prod Category: WINDOW Series/Model: 3200 Item Reference #: LCNOA 08-01 Revision #:

Series: 3200 Outswing Impact Casement Window GLASS & DP CHARTS AND GLAZING DETAILS FOR "XX-OX-XO" UNITS

Product Reference Number: CASEMENT3200-08NOA-01 Drawing Number: L3200-0801 Sheet: 6 OF 7

MARCH 4, 2009
08-1020.08

[Signature]



THOMAS V. SOTOS
PROFESSIONAL ENGINEER
FL LIC. # 55225

DATE _____

MARCH 4, 2009
08-1026.08
Upmael Perez

LAWSON INDUSTRIES, INC.
MANUFACTURER OF QUALITY ALUMINUM WINDOWS AND GLASS DOORS

8501 N.W. 90 ST.
MEDLEY, FLORIDA 33166
PH No. (305) 696-8660

Draw Class: NOA	Part Class: ASSEMBLY	Prod Category: WINDOW	Series/Model: 3200	Item Reference #: LCNOA 08-01	Revision #:
Drawn By: N. ERAZO	Date Drawn: 07/27/08	Series: 3200 Outswing Impact Casement Window			
Revised By:	Date Revised:	EXTRUSION CROSS-SECTIONS, & ASSEMBLY DETAILS			
Revision Level:	Scale:	Product Reference Number: CASEMENT3200-08NOA-01	Drawing Number: L3200-0801	Sheet: 7 OF 7	