



BUILDING CODE COMPLIANCE OFFICE (BCCO)  
PRODUCT CONTROL DIVISION

MIAMI-DADE COUNTY, FLORIDA  
METRO-DADE FLAGLER BUILDING  
140 WEST FLAGLER STREET, SUITE 1603  
MIAMI, FLORIDA 33130-1563  
(305) 375-2901 FAX (305) 375-2908

[www.miamidade.gov/buildingcode.com](http://www.miamidade.gov/buildingcode.com)

**NOTICE OF ACCEPTANCE (NOA)**

Lawson Industries, Inc.  
8501 NW 90<sup>th</sup> Street  
Medley, FL 33166

**SCOPE:**

This NOA is being issued under the applicable rules and regulations governing the use of construction materials. The documentation submitted has been reviewed by Miami-Dade County Product Control Division and accepted by the Board of Rules and Appeals (BORA) to be used in Miami Dade County and other areas where allowed by the Authority Having Jurisdiction (AHJ).

This NOA shall not be valid after the expiration date stated below. The Miami-Dade County Product Control Division (In Miami Dade County) and/or the AHJ (in areas other than Miami Dade County) reserve the right to have this product or material tested for quality assurance purposes. If this product or material fails to perform in the accepted manner, the manufacturer will incur the expense of such testing and the AHJ may immediately revoke, modify, or suspend the use of such product or material within their jurisdiction. BORA reserves the right to revoke this acceptance, if it is determined by Miami-Dade County Product Control Division that this product or material fails to meet the requirements of the applicable building code.

This product is approved as described herein, and has been designed to comply with the Florida Building Code, including the High Velocity Hurricane Zone.

**DESCRIPTION: Series "PW 4200/ 6200" Aluminum Fixed Window – L.M.I.**

**APPROVAL DOCUMENT:** Drawing No. **W02-55**, titled "PW-4200/6200 Alum. Fixed Window (Impact)", sheets 1 through 6 of 6, dated June 06, 2002 with revision "C" dated June 20, 2007, prepared by Al Farooq Corporation and dated June 27, 2007, signed and sealed by Humayoun Farooq, P.E., bearing the Miami-Dade County Product Control Renewal stamp with the Notice of Acceptance number and expiration date by the Miami-Dade County Product Control Division.

**MISSILE IMPACT RATING: Large and Small Missile Impact Resistant**

**LABELING:** Each unit shall bear a permanent label with the manufacturer's name or logo, city, state and following statement: "Miami-Dade County Product Control Approved", unless otherwise noted herein.

**RENEWAL** of this NOA shall be considered after a renewal application has been filed and there has been no change in the applicable building code negatively affecting the performance of this product.

**TERMINATION** of this NOA will occur after the expiration date or if there has been a revision or change in the materials, use, and/or manufacture of the product or process. Misuse of this NOA as an endorsement of any product, for sales, advertising or any other purposes shall automatically terminate this NOA. Failure to comply with any section of this NOA shall be cause for termination and removal of NOA.

**ADVERTISEMENT:** The NOA number preceded by the words Miami-Dade County, Florida, and followed by the expiration date may be displayed in advertising literature. If any portion of the NOA is displayed, then it shall be done in its entirety.

**INSPECTION:** A copy of this entire NOA shall be provided to the user by the manufacturer or its distributors and shall be available for inspection at the job site at the request of the Building Official.

This NOA **renews and revises** NOA # **06-0117.02** and, consists of this page 1 and evidence pages E-1, E-2, E-3 and E-4 as well as approval document mentioned above.

The submitted documentation was reviewed by **Jaime D. Gascon, P.E.**



*J. Gascon*  
*7/4/07*

NOA No 07-0516.02  
Expiration Date: August 22, 2012  
Approval Date: August 02, 2007  
Page 1

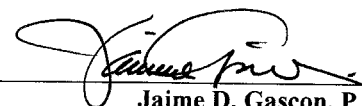
NOTICE OF ACCEPTANCE: EVIDENCE SUBMITTED

**A. DRAWINGS**

1. Manufacturer's die drawings and sections.
2. Drawing No. **W02-55**, titled "PW-4200/6200 Alum. Fixed Window (Impact)", sheets 1 through 6 of 6, dated June 06, 2002 with revision "C" dated June 20, 2007, prepared by Al Farooq Corporation and dated June 27, 2007, signed and sealed by Humayoun Farooq, P.E.

**B. TESTS**

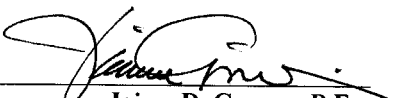
1. Test reports on 1) Large Missile Impact Test per FBC, TAS 201-94  
2) Cyclic Wind Pressure Loading per FBC, TAS 203-94  
along with marked-up drawings and installation diagram of a fixed window, prepared by Hurricane Engineering & Testing, Inc., Test Report No. **HETI-03-1774A**, dated 1/30/03, signed and sealed by Raphael Droz-Seda, P.E.  
*"Submitted under NOA# 06-0117.02"*
2. Test reports on 1) Uniform Static Air Pressure Test, Loading per FBC, TAS 202-94  
along with marked-up drawings and installation diagram of a fixed window, prepared by Hurricane Engineering & Testing, Inc., Test Report No. **HETI-03-1778**, dated 1/30/03, signed and sealed by Raphael Droz-Seda, P.E.  
*"Submitted under NOA# 06-0117.02"*
3. Test reports on 1) Large Missile Impact Test per FBC, TAS 201-94  
2) Cyclic Wind Pressure Loading per FBC, TAS 203-94  
along with marked-up drawings and installation diagram of a fixed window, prepared by Hurricane Engineering & Testing, Inc., Test Report No. **HETI-03-1777**, dated 1/30/03, signed and sealed by Raphael Droz-Seda, P.E.  
*"Submitted under NOA# 06-0117.02"*
4. Test reports on 1) Uniform Static Air Pressure Test, Loading per FBC, TAS 202-94  
along with marked-up drawings and installation diagram of a fixed window, prepared by Hurricane Engineering & Testing, Inc., Test Report No. **HETI-03-1778**, dated 1/30/03, signed and sealed by Raphael Droz-Seda, P.E.  
*"Submitted under NOA# 06-0117.02"*
5. Test reports on 1) Cyclic Wind Pressure Loading per FBC, TAS 203-94  
2) Large Missile Impact Test per FBC, TAS 201-94  
along with marked-up drawings and installation diagram of a fixed window, prepared by Hurricane Engineering & Testing, Inc., Test Report No. **HETI-01-1098**, dated 2/11/02, signed and sealed by Hector Medina, P.E.  
*"Submitted under NOA# 06-0117.02"*



Jaime D. Gascon, P.E.  
Chief, Product Control Division  
NOA No 07-0516.02  
Expiration Date: August 22, 2012  
Approval Date: August 02, 2007

**NOTICE OF ACCEPTANCE: EVIDENCE SUBMITTED**

6. Test reports on 1) Cyclic Wind Pressure Loading per FBC, TAS 203-94  
2) Large Missile Impact Test per FBC, TAS 201-94  
along with marked-up drawings and installation diagram of a fixed window, prepared by Hurricane Engineering & Testing, Inc., Test Report No. **HETI-01-1103**, dated 2/12/02, signed and sealed by Hector Medina, P.E.  
*"Submitted under NOA# 06-0117.02"*
7. Test reports on 1) Cyclic Wind Pressure Loading per FBC, TAS 203-94  
2) Large Missile Impact Test per FBC, TAS 201-94  
along with marked-up drawings and installation diagram of a fixed window, prepared by Hurricane Engineering & Testing, Inc., Test Report No. **HETI-01-1102**, dated 11/16/02, signed and sealed by Hector Medina, P.E.  
*"Submitted under NOA# 06-0117.02"*
8. Test reports on 1) Air Infiltration Test, per FBC, TAS 202-94  
2) Uniform Static Air Pressure Test, Loading per FBC, TAS 202-94  
3) Water Resistance Test, per FBC, TAS 202-94  
along with marked-up drawings and installation diagram of a fixed window, prepared by Hurricane Engineering & Testing, Inc., Test Report No. **HETI-02-1215**, dated 4/8/02, signed and sealed by Hector Medina, P.E.  
*"Submitted under NOA# 06-0117.02"*
9. Test reports on 1) Cyclic Wind Pressure Loading per FBC, TAS 203-94  
2) Large Missile Impact Test per FBC, TAS 201-94  
along with marked-up drawings and installation diagram of a fixed window, prepared by Hurricane Engineering & Testing, Inc., Test Report No. **HETI-02-1158**, dated 4/8/02, signed and sealed by Hector Medina, P.E.  
*"Submitted under NOA# 06-0117.02"*
10. Test reports on 1) Cyclic Wind Pressure Loading per FBC, TAS 203-94  
2) Large Missile Impact Test per FBC, TAS 201-94  
along with marked-up drawings and installation diagram of a fixed window, prepared by Hurricane Engineering & Testing, Inc., Test Report No. **HETI-01-1099**, dated 2/14/02, signed and sealed by Hector Medina, P.E.  
*"Submitted under NOA# 06-0117.02"*
11. Test reports on 1) Air Infiltration Test, per FBC, TAS 202-94  
2) Uniform Static Air Pressure Test, Loading per FBC, TAS 202-94  
3) Water Resistance Test, per FBC, TAS 202-94  
along with marked-up drawings and installation diagram of a fixed window, prepared by Hurricane Engineering & Testing, Inc., Test Report No. **HETI-01-1193**, dated 4/8/02, signed and sealed by Hector Medina, P.E.  
*"Submitted under NOA# 06-0117.02"*



Jaime D. Gascon, P.E.

Chief, Product Control Division  
NOA No 07-0516.02

Expiration Date: August 22, 2012  
Approval Date: August 02, 2007

**Lawson Industries, Inc.**

**NOTICE OF ACCEPTANCE: EVIDENCE SUBMITTED**

12. Test reports on 1) Uniform Static Air Pressure Test, Loading per FBC, TAS 202-94 along with marked-up drawings and installation diagram of a fixed window, prepared by Hurricane Engineering & Testing, Inc., Test Report No. **HETI-02-1216**, dated 4/9/02, signed and sealed by Hector Medina, P.E.  
*"Submitted under NOA# 06-0117.02"*
13. Test reports on 1) Cyclic Wind Pressure Loading per FBC, TAS 203-94  
2) Large Missile Impact Test per FBC, TAS 201-94 along with marked-up drawings and installation diagram of a fixed window, prepared by Hurricane Engineering & Testing, Inc., Test Report No. **HETI-01-1103B**, dated 2/18/02, signed and sealed by Hector Medina, P.E.  
*"Submitted under NOA# 06-0117.02"*
14. Test reports on 1) Uniform Static Air Pressure Test, Loading per FBC, TAS 202-94 along with marked-up drawings and installation diagram of a fixed window, prepared by Hurricane Engineering & Testing, Inc., Test Report No. **HETI-01-1195**, dated 11/15/02, signed and sealed by Hector Medina, P.E.  
*"Submitted under NOA# 06-0117.02"*
15. Test reports on 1) Cyclic Wind Pressure Loading per FBC, TAS 203-94  
2) Large Missile Impact Test per FBC, TAS 201-94 along with marked-up drawings and installation diagram of a fixed window, prepared by Hurricane Engineering & Testing, Inc., Test Report No. **HETI-01-1104**, dated 2/14/02, signed and sealed by Hector Medina, P.E.  
*"Submitted under NOA# 06-0117.02"*
16. Test reports on 1) Uniform Static Air Pressure Test, Loading per FBC, TAS 202-94 along with marked-up drawings and installation diagram of a fixed window, prepared by Hurricane Engineering & Testing, Inc., Test Report No. **HETI-01-1196**, dated 11/16/02, signed and sealed by Hector Medina, P.E.  
*"Submitted under NOA# 06-0117.02"*
17. Test reports on 1) Cyclic Wind Pressure Loading per FBC, TAS 203-94  
2) Large Missile Impact Test per FBC, TAS 201-94 along with marked-up drawings and installation diagram of a fixed window, prepared by Hurricane Engineering & Testing, Inc., Test Report No. **HETI-02-1136**, dated 2/12/02, signed and sealed by Hector Medina, P.E.  
*"Submitted under NOA# 06-0117.02"*

**C. CALCULATIONS**

1. Revised Anchor Verification Calculations complying w/ FBC 2004, prepared by AL-Farooq Corporation, dated 11/11/05, signed and sealed by Humayoun Farooq, P.E  
**Complies with ASTM E 1300-98 and 02**
2. Anchor Calculations and structural analysis, prepared by Al Farooq Corporation, dated 6/17/02, signed and sealed by Humayoun Farooq, P.E.  
*"Submitted under NOA# 06-0117.02"*



Jaime D. Gascon, P.E.

Chief, Product Control Division

NOA No 07-0516.02

Expiration Date: August 22, 2012

Approval Date: August 02, 2007

**Lawson Industries, Inc.**

**NOTICE OF ACCEPTANCE: EVIDENCE SUBMITTED**

**D. QUALITY ASSURANCE**

1. Miami Dade Building Code Compliance Office (BCCO).

**E. MATERIAL CERTIFICATIONS**

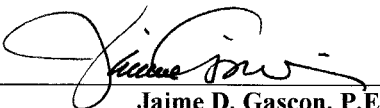
1. Notice of Acceptance No. **06-1205.01** issued to E.I. DuPont DeNemours & Co., Inc. for their "**DuPont Sentry Glass ® Plus**" dated 02/15/07, expiring on 01/14/08.
2. Notice of Acceptance No. **06-0216.06** issued to Solutia Inc. for their "**Saflex III G Clear or colored interlayer**" dated May 04, 2006, expiring on May 21, 2011.
3. Notice of Acceptance No. **02-1205.03** issued to Security Impact Glass Holdings L.L.C. for "**SAF-GLAS**" dated 01/02/03, expiring on 12/16/07.

**F. STATEMENTS**

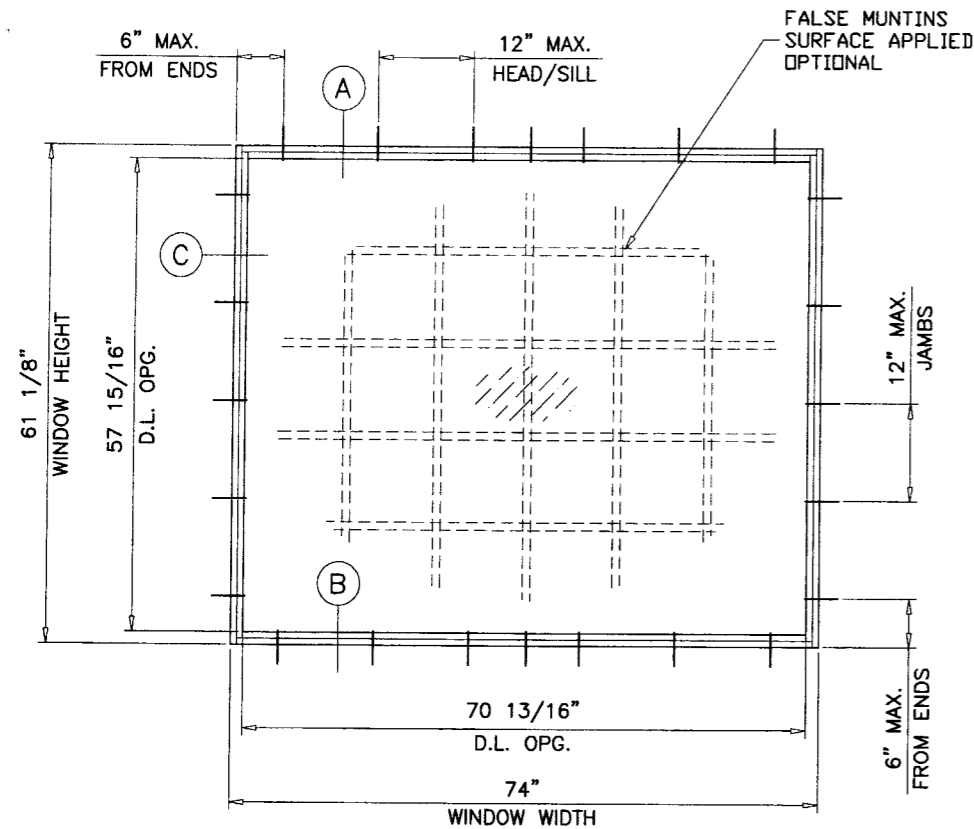
1. Statement letter of conformance and no financial interest, dated May 14, 2007, signed and sealed by Humayoun Farooq, P.E.
2. Statement letter of compliance, dated May 11, 2007, signed and sealed by Humayoun Farooq, P.E.

**G. OTHER**

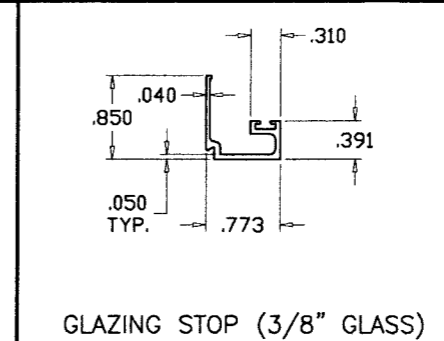
1. None



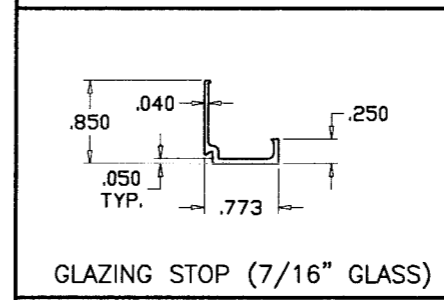
Jaime D. Gascon, P.E.  
Chief, Product Control Division  
NOA No 07-0516.02  
Expiration Date: August 22, 2012  
Approval Date: August 02, 2007



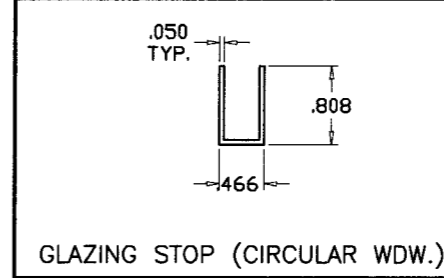
**TYPICAL ELEVATION**  
TESTED UNIT



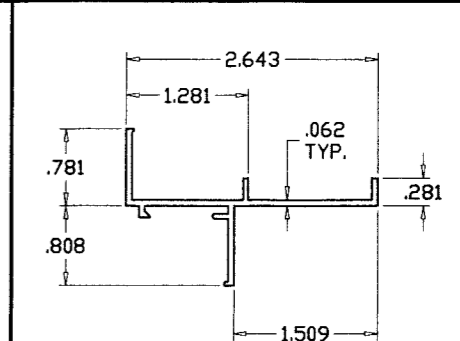
GLAZING STOP (3/8" GLASS)



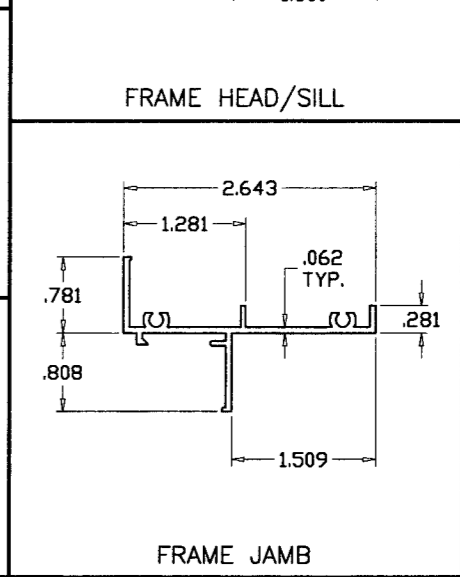
GLAZING STOP (7/16" GLASS)



GLAZING STOP (CIRCULAR WDW.)



FRAME HEAD/SILL



FRAME JAMB

**NOTES:**

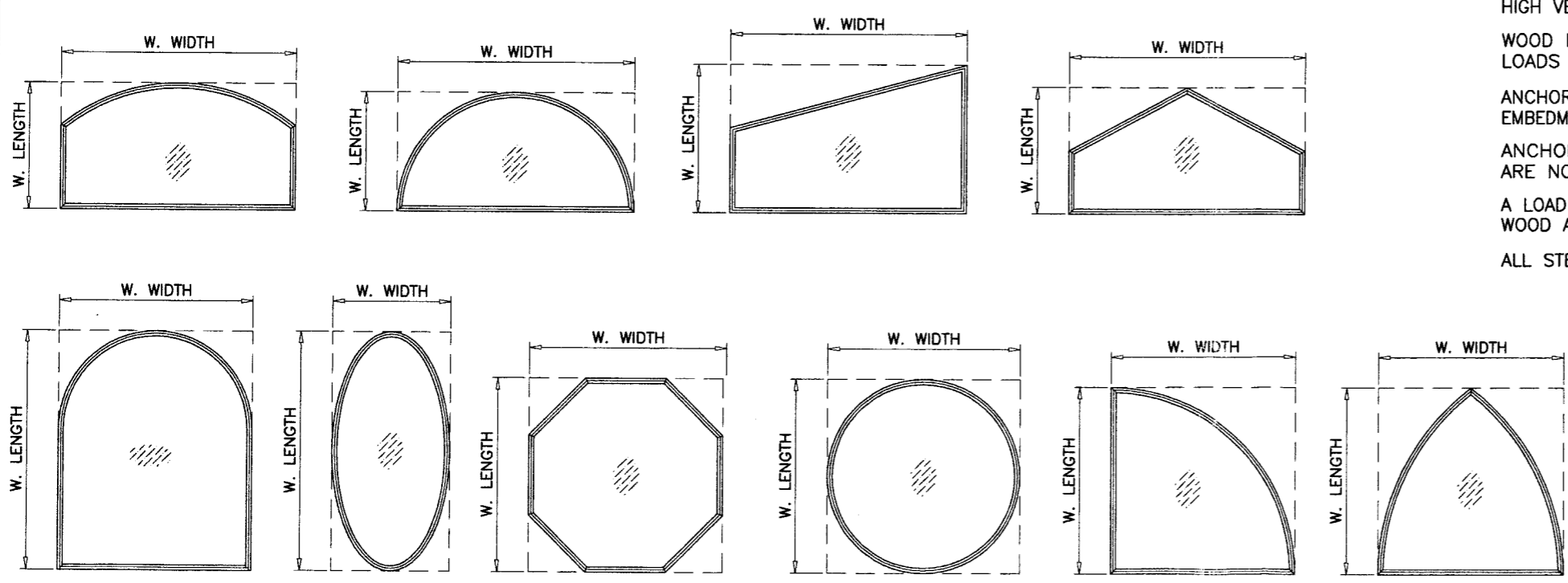
THIS PRODUCT HAS BEEN DESIGNED AND TESTED TO COMPLY WITH THE REQUIREMENTS OF THE FLORIDA BUILDING CODE 2004 EDITION INCLUDING HIGH VELOCITY HURRICANE ZONE.

WOOD BUCKS BY OTHERS, MUST BE ANCHORED PROPERLY TO TRANSFER LOADS TO THE STRUCTURE.

ANCHORS SHALL BE AS LISTED, SPACED AS SHOWN ON DETAILS, ANCHORS EMBEDMENT TO BASE MATERIAL SHALL BE BEYOND WALL DRESSING OR STUCCO. ANCHORING OR LOADING CONDITIONS NOT SHOWN IN THESE DETAILS ARE NOT PART OF THIS APPROVAL.

A LOAD DURATION INCREASE IN ALLOWABLE STRESS IS USED IN DESIGN OF WOOD ANCHORS ONLY.

ALL STEEL IN CONTACT WITH ALUMINUM TO BE PAINTED OR PLATED.



ALLOWABLE LOADS FOR ALTERNATE SHAPES AS SHOWN ABOVE OR SIMILAR CAN BE VERIFIED BY INSCRIBING PICTURE WINDOW SHAPE WITHIN SQUARE OR RECTANGLE AS SHOWN IN DOTTED LINES AND OBTAINING ALLOWABLE LOADS FROM THOSE SHAPES.

Engr: DR. HUMAYOUN FAROOQ  
STRUCTURES  
FLA. PE # 16557  
C.A.N. 3538

PRODUCT LISTED  
as complying with the Florida  
Building Code  
Acceptance No. 07-0516.02  
Expiration Date 09/22/2012  
By *[Signature]*  
Miami Dade Product Control  
Division

JUN 27 2008

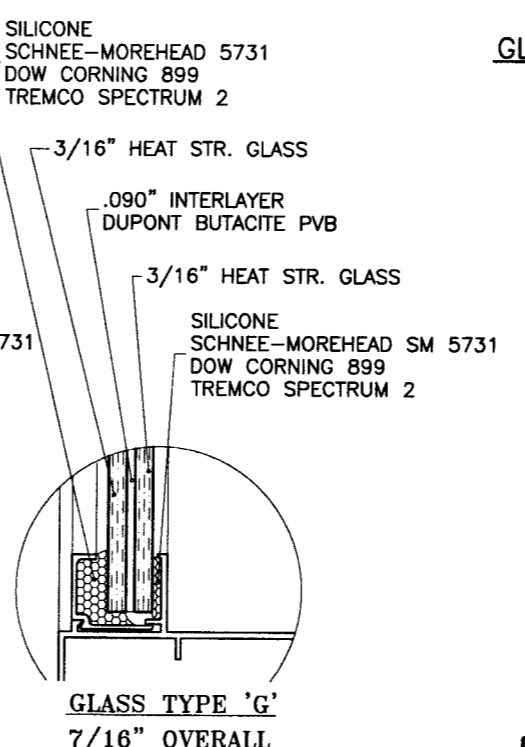
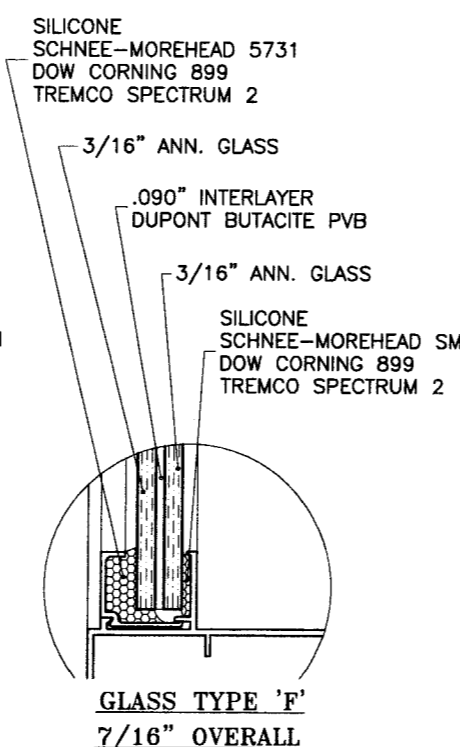
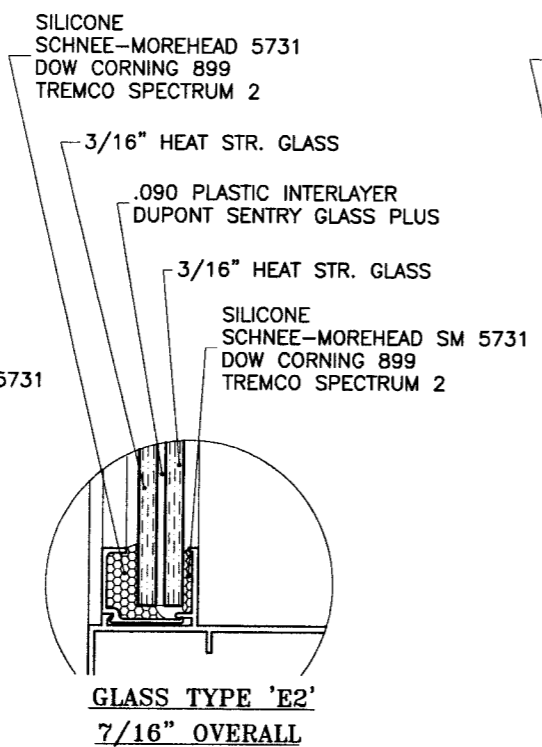
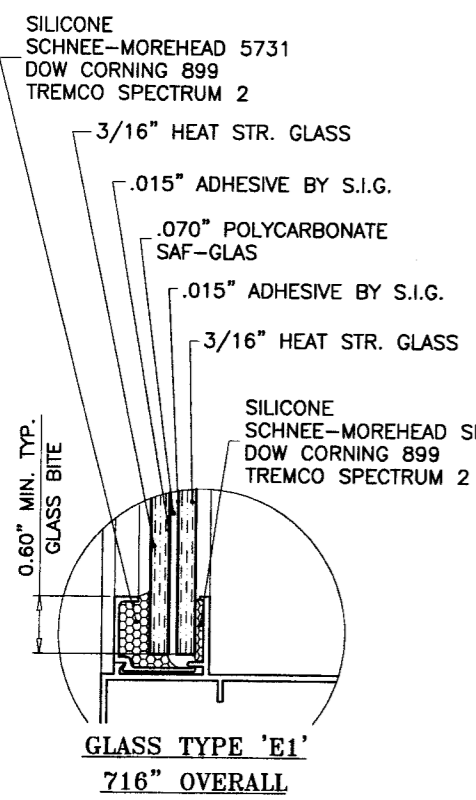
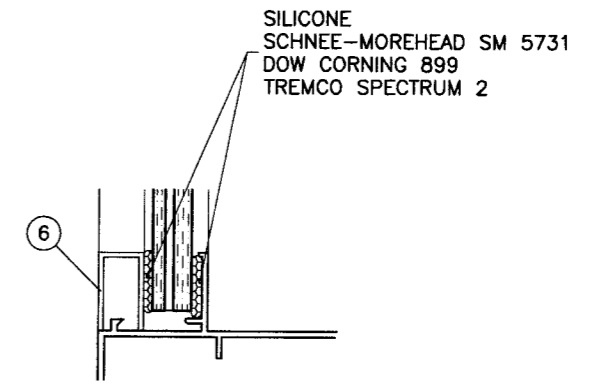
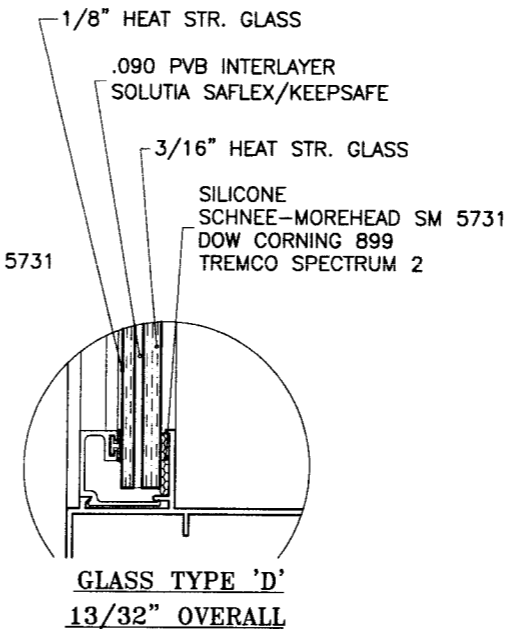
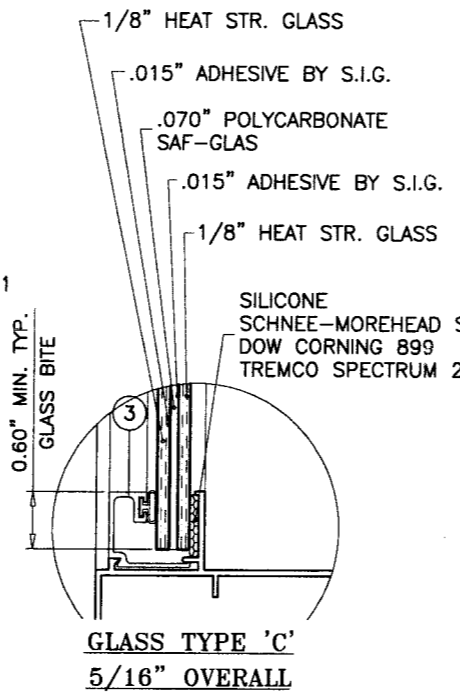
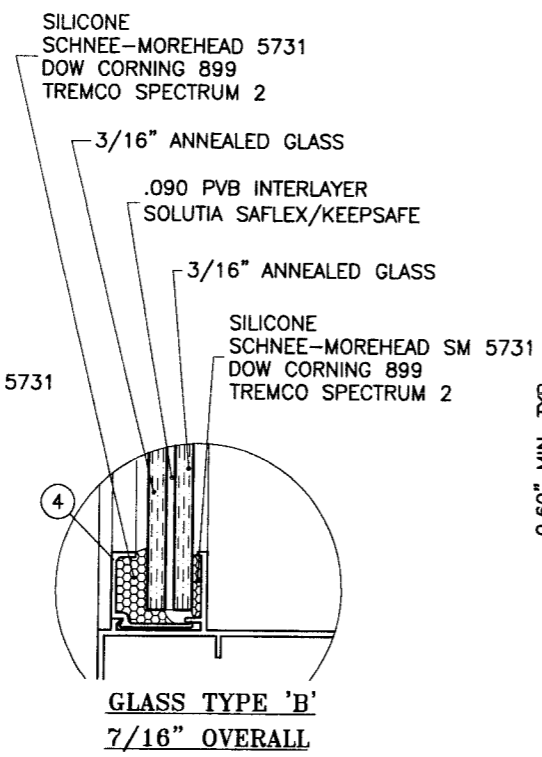
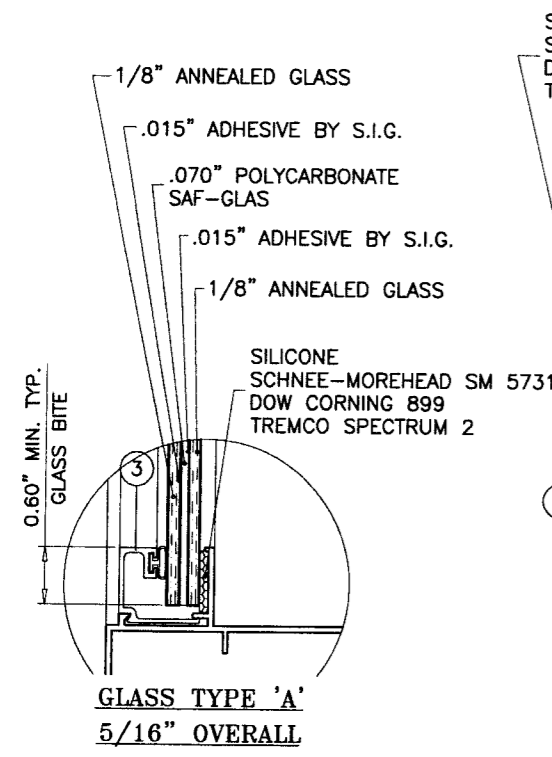
**AL-FAROOQ CORPORATION**  
ENGINEERS, PLANNERS & PRODUCT DESIGN  
1235 SW 87 AVE  
MIAMI, FLORIDA 33174  
TEL. (305) 264-8100 FAX. (305) 262-6978

PW-4200/6200 ALUM FIXED WINDOW (IMPACT)  
**LAWSON INDUSTRIES**  
8501 N.W. 90TH STREET  
MEDLEY, FL. 33160  
TEL. (305) 696-8660 FAX (305) 696-6006

revisions:	no	date	description
	A	03.05.03	GLASS TYPE F&G; CIRCULAR WDW. ADD; SHEET 6 ADDED
	B	11.14.05	UPDATED FOR 2004 FBC
	C	06.20.07	REV. PER BCCO COMMENTS

date: 06-06-02  
scale: 1/2" = 1"  
dr. by: HAMID  
chk. by:

drawing no.  
**W02-55**  
sheet 1 of 6



**GLAZING OPTIONS**  
LARGE MISSILE IMPACT RESISTANT GLASS, SHUTTERS ARE NOT REQUIRED  
SEE SHEETS 3 & 4 FOR CAPACITIES

Engr: DR. HUMAYOON FAROOQ  
STRUCTURES  
FLA. PE # 16557  
C.A.N. 3538

*[Signature]*  
JUN 27 2012

PRODUCT RENEWED  
as compliant with the Florida  
Building Code  
Acceptance No. 07-0516.02  
Expiration Date 08/22/2012

By *[Signature]*  
Miami Dade Product Control  
Division

**AL-FAROOQ CORPORATION**  
ENGINEERS, PLANNERS & PRODUCT DESIGN  
1235 SW 87 AVE  
MIAMI, FLORIDA 33174  
TEL. (305) 264-8100 FAX. (305) 262-6978  
COMP-ANL\W02-55LI

PW-4200/6200 ALUM FIXED WINDOW (IMPACT)  
**LAWSON INDUSTRIES**  
8501 N.W. 90TH STREET  
MEDLEY, FL. 33160  
TEL. (305) 696-8660 FAX (305) 696-6006

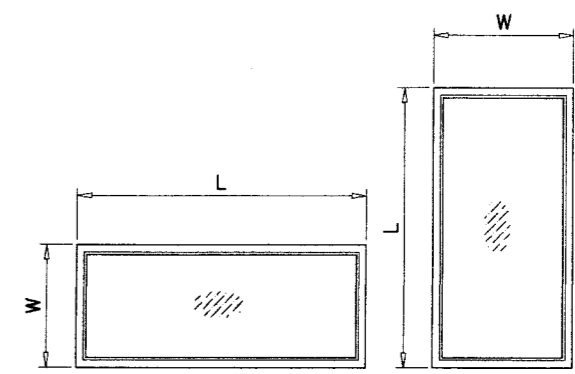
no	date	by	description
A	03.05.03		GLASS TYPES F & G ADDED
B	11.14.05		NO CHANGE THIS SHEET
C	06.20.07		REV. PER BCCO COMMENTS

revisions:

date: 06-06-02  
scale: 1/2" = 1"  
dr. by: HAMID  
chk. by:

drawing no.  
**W02-55**  
sheet 2 of 6

DESIGN LOAD CAPACITY - PSF													
WINDOW DIMS.		GLASS TYPE 'A'		GLASS TYPE 'B'		GLASS TYPE 'F'		GLASS TYPE 'C'		GLASS TYPE 'D' & 'G'		GLASS TYPE 'E1' & 'E2'	
WIDTH	LENGTH	EXT. (+)	INT. (-)	EXT. (+)	INT. (-)	EXT. (+)	INT. (-)	EXT. (+)	INT. (-)	EXT. (+)	INT. (-)	EXT. (+)	INT. (-)
19-1/8"	26"	65.0	65.0	68.0	68.0	68.0	68.0	75.0	75.0	65.0	65.0	78.0	78.0
26-1/2"		65.0	65.0	68.0	68.0	68.0	68.0	75.0	75.0	65.0	65.0	78.0	78.0
37"		65.0	65.0	68.0	68.0	68.0	68.0	75.0	75.0	65.0	65.0	78.0	78.0
48"		65.0	65.0	68.0	68.0	68.0	68.0	75.0	75.0	65.0	65.0	78.0	78.0
53-1/8"		65.0	65.0	68.0	68.0	68.0	68.0	75.0	75.0	65.0	65.0	78.0	78.0
19-1/8"	38-3/8"	65.0	65.0	68.0	68.0	68.0	68.0	75.0	75.0	65.0	65.0	78.0	78.0
26-1/2"		65.0	65.0	68.0	68.0	68.0	68.0	75.0	75.0	65.0	65.0	78.0	78.0
37"		61.9	61.9	68.0	68.0	66.2	66.2	75.0	75.0	65.0	65.0	78.0	78.0
48"		58.7	58.7	68.0	68.0	63.8	63.8	75.0	75.0	65.0	65.0	78.0	78.0
53-1/8"		X	X	X	X	63.8	63.8	75.0	75.0	65.0	65.0	78.0	78.0
19-1/8"	50-5/8"	65.0	65.0	68.0	68.0	68.0	68.0	75.0	75.0	65.0	65.0	78.0	78.0
26-1/2"		65.0	65.0	68.0	68.0	68.0	68.0	75.0	75.0	65.0	65.0	78.0	78.0
37"		48.1	48.1	68.0	68.0	66.2	66.2	75.0	75.0	65.0	65.0	78.0	78.0
48"		X	X	X	X	51.0	51.0	68.0	65.9	65.0	65.0	78.0	78.0
53-1/8"		X	X	X	X	X	X	64.4	64.4	65.0	65.0	78.0	78.0
19-1/8"	58"	65.0	65.0	68.0	68.0	68.0	68.0	75.0	75.0	65.0	65.0	78.0	78.0
26-1/2"		61.3	61.3	68.0	68.0	68.0	68.0	75.0	75.0	65.0	65.0	78.0	78.0
37"		X	X	X	X	66.2	66.2	75.0	75.0	65.0	65.0	78.0	78.0
48"		X	X	X	X	X	X	X	X	65.0	65.0	78.0	78.0
53-1/8"		X	X	X	X	X	X	X	X	65.0	65.0	78.0	78.0
19-1/8"	63"	65.0	65.0	68.0	68.0	68.0	68.0	75.0	75.0	65.0	65.0	78.0	78.0
26-1/2"		60.3	60.3	68.0	68.0	68.0	68.0	75.0	75.0	65.0	65.0	78.0	78.0
37"		X	X	X	X	66.2	66.2	75.0	75.0	65.0	65.0	78.0	78.0
48"		X	X	X	X	X	X	X	X	65.0	65.0	78.0	78.0
53-1/8"		X	X	X	X	X	X	X	X	65.0	65.0	78.0	78.0
19-1/8"	74"	65.0	65.0	68.0	68.0	68.0	68.0	75.0	75.0	65.0	65.0	78.0	78.0
26-1/2"		X	X	X	X	68.0	68.0	75.0	75.0	65.0	65.0	78.0	78.0
37"		X	X	X	X	X	X	62.8	62.8	65.0	65.0	78.0	78.0
48"		X	X	X	X	X	X	X	X	65.0	65.0	75.6	75.6
53-1/8"		X	X	X	X	X	X	X	X	65.0	65.0	72.0	72.0
19-1/8"	74-1/4"	65.0	65.0	68.0	68.0	68.0	68.0	75.0	75.0	65.0	65.0	78.0	78.0
26-1/2"		X	X	X	X	68.0	68.0	75.0	75.0	65.0	65.0	78.0	78.0
37"		X	X	X	X	X	X	X	X	65.0	65.0	78.0	78.0
48"		X	X	X	X	X	X	X	X	65.0	65.0	75.2	75.2
53-1/8"		X	X	X	X	X	X	X	X	65.0	65.0	71.6	71.6



NOTE:  
WIDTH AND LENGTH DIMENSIONS CAN BE ORIENTED VERTICALLY OR HORIZONTALLY AS SHOWN ABOVE.

NOTE:  
GLASS CAPACITIES ON THIS SHEET ARE BASED ON  
A: ASTM E1300-98 (60 SEC. WIND)  
B: ASTM E1300-02 (3 SEC. GUSTS)

Engr: DR. HUMAYOUN FAROOQ  
STRUCTURES  
FLA. PE # 16557  
C.A.N. 3538

JUN 27 2008

PRODUCT RENEWED  
as complying with the Florida  
Building Code  
Acceptance No 07-0516.02  
Expiration Date 08/22/2012

By: *[Signature]*  
Miami Code Product Control  
Division

**afc**

**AL-FAROOQ CORPORATION**  
ENGINEERS, PLANNERS & PRODUCT DESIGN  
1235 SW 87 AVE  
MIAMI, FLORIDA 33174  
TEL. (305) 264-8100 FAX. (305) 262-6978  
COMP-ANL\W02-55L1

---

PW-4200/6200 ALUM FIXED WINDOW (IMPACT)

**LAWSON INDUSTRIES**  
8501 N.W. 90TH STREET  
MEDLEY, FL. 33160  
TEL. (305) 696-8660 FAX (305) 696-6006

no	date	description
A	03.05.03	GLASS TYPES F & G ADDED
B	11.14.05	CHARTS REV.
C	06.20.07	NO CHANGE THIS SHEET

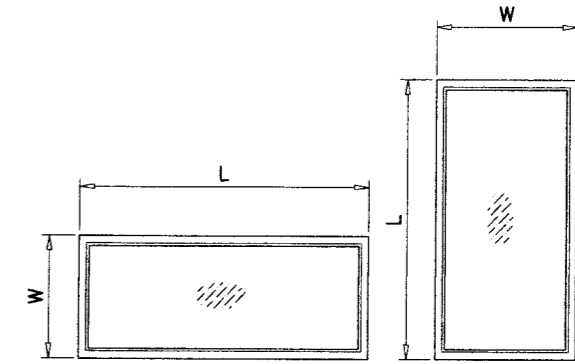
revisions:

date: 06-06-02  
scale: 1/2" = 1"  
dr. by: HAMID  
chk. by:

drawing no. **W02-55**  
sheet 3 of 6

DESIGN LOAD CAPACITY - PSF

WINDOW DIMS.		GLASS TYPE 'A'		GLASS TYPE 'B'		GLASS TYPE 'F'		GLASS TYPE 'C'		GLASS TYPE 'D' & 'G'		GLASS TYPE 'E1' & 'E2'	
WIDTH	LENGTH	EXT. (+)	INT. (-)	EXT. (+)	INT. (-)	EXT. (+)	INT. (-)	EXT. (+)	INT. (-)	EXT. (+)	INT. (-)	EXT. (+)	INT. (-)
24"	36"	65.0	65.0	68.0	68.0	68.0	68.0	75.0	75.0	65.0	65.0	78.0	78.0
30"		65.0	65.0	68.0	68.0	68.0	68.0	75.0	75.0	65.0	65.0	78.0	78.0
36"		65.0	65.0	68.0	68.0	68.0	68.0	75.0	75.0	65.0	65.0	78.0	78.0
42"		57.9	57.9	68.0	68.0	68.0	68.0	75.0	75.0	65.0	65.0	78.0	78.0
48"		51.4	51.4	68.0	68.0	68.0	68.0	75.0	75.0	65.0	65.0	78.0	78.0
54"		X	X	68.0	68.0	68.0	68.0	75.0	75.0	65.0	65.0	78.0	78.0
60"		X	X	68.0	68.0	68.0	68.0	75.0	75.0	65.0	65.0	78.0	78.0
24"	48"	65.0	65.0	68.0	68.0	68.0	68.0	75.0	75.0	65.0	65.0	78.0	78.0
30"		61.8	61.8	68.0	68.0	68.0	68.0	75.0	75.0	65.0	65.0	78.0	78.0
36"		51.4	51.4	68.0	68.0	68.0	68.0	75.0	75.0	65.0	65.0	78.0	78.0
42"		X	X	64.7	64.7	58.3	58.3	75.0	75.0	65.0	65.0	78.0	78.0
48"		X	X	56.6	56.6	51.0	51.0	68.0	68.0	65.0	65.0	78.0	78.0
54"		X	X	56.6	56.6	51.0	51.0	68.0	68.0	65.0	65.0	78.0	78.0
60"		X	X	X	X	X	X	X	X	65.0	65.0	78.0	78.0
24"	60"	65.0	65.0	68.0	68.0	68.0	68.0	75.0	75.0	65.0	65.0	78.0	78.0
30"		49.9	49.9	68.0	68.0	68.0	68.0	75.0	75.0	65.0	65.0	78.0	78.0
36"		X	X	68.0	68.0	68.0	68.0	75.0	75.0	65.0	65.0	78.0	78.0
42"		X	X	64.7	64.7	58.3	58.3	75.0	75.0	65.0	65.0	78.0	78.0
48"		X	X	X	X	X	X	X	X	65.0	65.0	78.0	78.0
54"		X	X	X	X	X	X	X	X	65.0	65.0	78.0	78.0
60"		X	X	X	X	X	X	X	X	65.0	65.0	78.0	78.0
24"	72"	65.0	65.0	68.0	68.0	68.0	68.0	75.0	75.0	65.0	65.0	78.0	78.0
30"		X	X	68.0	68.0	68.0	68.0	75.0	75.0	65.0	65.0	78.0	78.0
36"		X	X	65.5	65.5	68.0	68.0	66.9	66.9	65.0	65.0	78.0	78.0
42"		X	X	X	X	X	X	X	X	65.0	65.0	78.0	78.0
48"		X	X	X	X	X	X	X	X	65.0	65.0	78.0	78.0
54"		X	X	X	X	X	X	X	X	65.0	65.0	74.7	74.7
60"		X	X	X	X	X	X	X	X	65.0	65.0	72.0	72.0
24"	74"	65.0	65.0	68.0	68.0	68.0	68.0	75.0	75.0	65.0	65.0	78.0	78.0
30"		X	X	68.0	68.0	68.0	68.0	75.0	75.0	65.0	65.0	78.0	78.0
36"		X	X	64.9	64.9	68.0	68.0	65.1	65.1	65.0	65.0	78.0	78.0
42"		X	X	X	X	X	X	X	X	65.0	65.0	78.0	78.0
48"		X	X	X	X	X	X	X	X	65.0	65.0	75.6	75.6
54"		X	X	X	X	X	X	X	X	65.0	65.0	71.5	71.5
60"		X	X	X	X	X	X	X	X	65.0	65.0	68.7	68.7
24"	84"	X	X	68.0	68.0	68.0	68.0	75.0	75.0	65.0	65.0	78.0	78.0
30"		X	X	68.0	68.0	68.0	68.0	75.0	75.0	65.0	65.0	78.0	78.0
36"		X	X	X	X	X	X	X	X	65.0	65.0	78.0	78.0
42"		X	X	X	X	X	X	X	X	65.0	65.0	78.0	78.0
48"		X	X	X	X	X	X	X	X	65.0	65.0	73.5	73.5
24"	96"	X	X	68.0	68.0	68.0	68.0	75.0	75.0	65.0	65.0	78.0	78.0
30"		X	X	X	X	X	X	X	X	65.0	65.0	78.0	78.0
36"		X	X	X	X	X	X	X	X	65.0	65.0	78.0	78.0
42"		X	X	X	X	X	X	X	X	65.0	65.0	76.8	76.8
24"	108"	X	X	68.0	68.0	68.0	68.0	75.0	75.0	65.0	65.0	78.0	78.0
30"		X	X	X	X	X	X	X	X	65.0	65.0	78.0	78.0
36"		X	X	X	X	X	X	X	X	65.0	65.0	74.7	74.7
24"	120"	X	X	X	X	X	X	X	X	65.0	65.0	78.0	78.0
30"		X	X	X	X	X	X	X	X	65.0	65.0	78.0	78.0
36"		X	X	X	X	X	X	X	X	65.0	65.0	74.1	74.1



NOTE:  
WIDTH AND LENGTH DIMENSIONS CAN BE ORIENTED VERTICALLY OR HORIZONTALLY AS SHOWN ABOVE.

**AL-FAROOQ CORPORATION**  
ENGINEERS, PLANNERS & PRODUCT DESIGN  
1235 SW 87 AVE  
MIAMI, FLORIDA 33174  
TEL. (305) 264-8100 FAX. (305) 262-6978

PW-4200/6200 ALUM FIXED WINDOW (IMPACT)  
**LAWSON INDUSTRIES**  
8501 N.W. 90TH STREET  
MEDLEY, FL. 33160  
TEL. (305) 696-8660 FAX (305) 696-6006

no	date	description
A	03.05.03	GLASS TYPES F & G ADDED
B	11.14.05	CHARTS REV.
C	06.20.07	NO CHANGE THIS SHEET

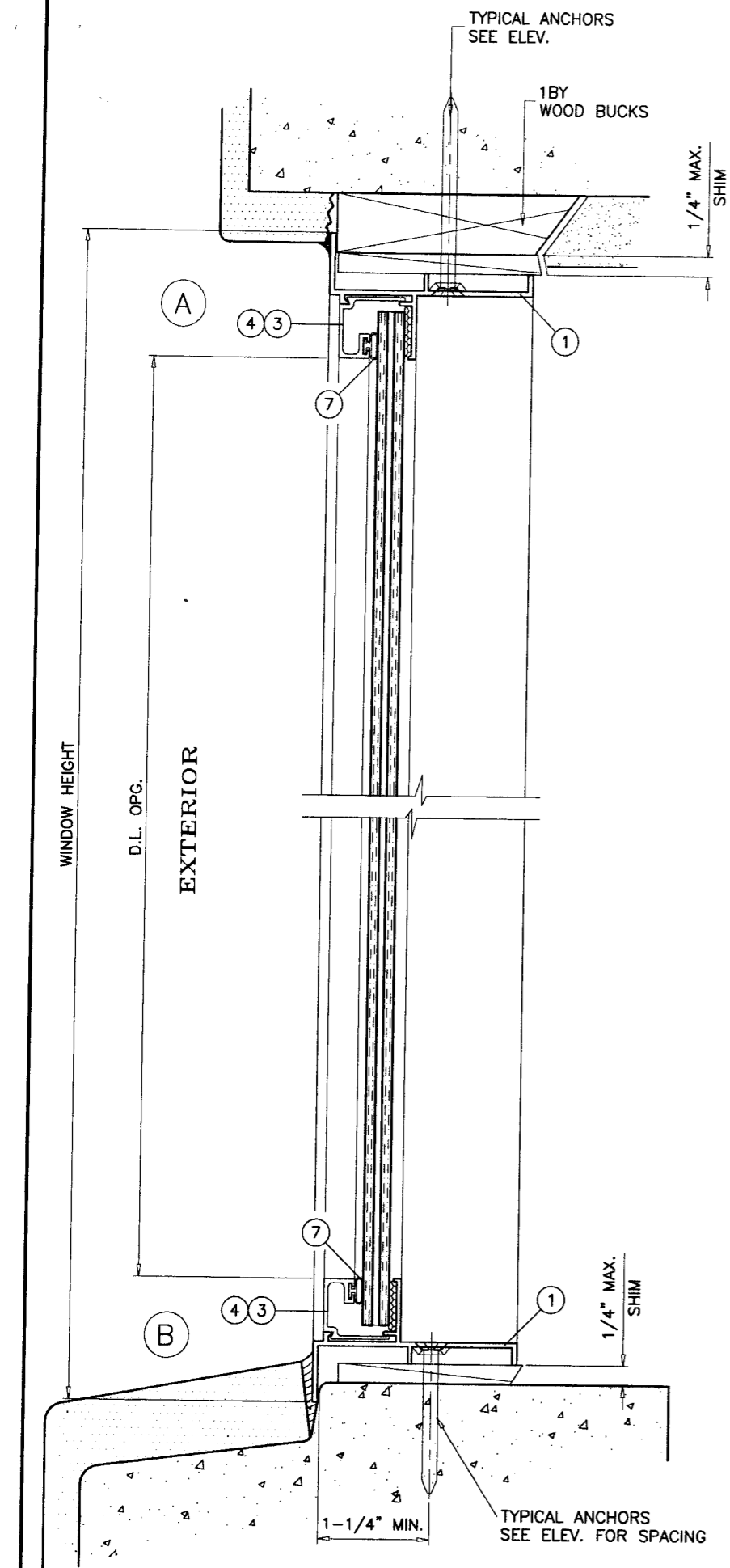
date: 06-06-02  
scale: 1/2" = 1"  
dr. by: HAMID  
chk. by:

Engr: DR. HUMAYOON FAROOQ  
STRUCTURES  
FLA. PE # 15557  
C.A.N. 3538  
JUN 27 2002

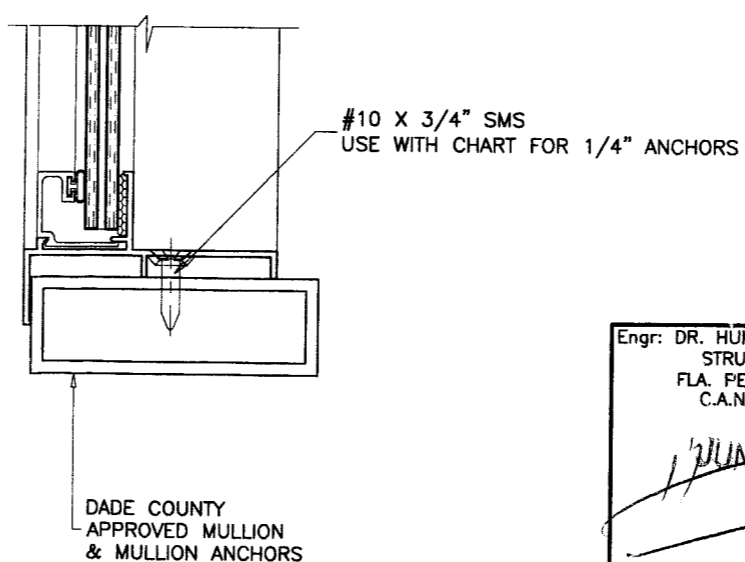
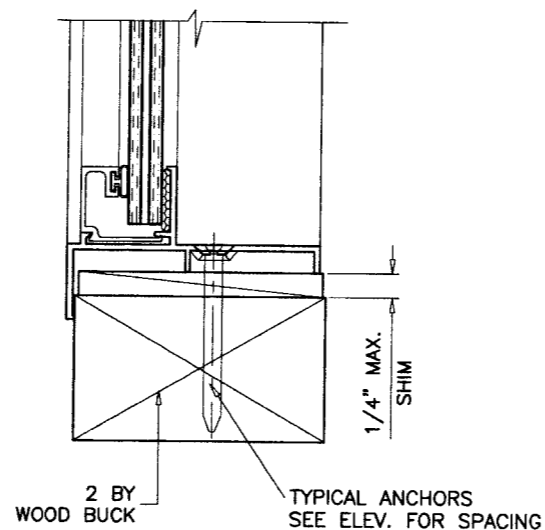
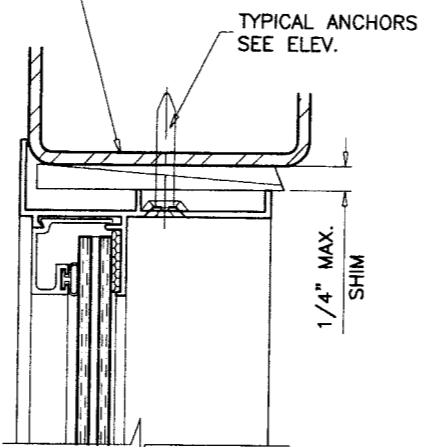
PRODUCT RENEWED  
as complying with the Florida  
Building Code  
Acceptance No 07-0516-02  
Expiration Date 08/22/2012  
By *[Signature]*  
Miami Dade Product Control  
Division

drawing no.  
**W02-55**  
sheet 4 of 6

NOTE:  
GLASS CAPACITIES ON THIS SHEET ARE BASED ON  
A: ASTM E1300-98 (60 SEC. WIND)  
B: ASTM E1300-02 (3 SEC. GUSTS)



METAL STRUCTURES  
(STEEL OR ALUM. 1/8" MIN. THICK)  
STEEL : Fy = 36 KSI MIN.  
ALUMINUM : 6063-T5 MIN.



WOOD BUCKS NOT BY LAWSON, MUST SUSTAIN LOADS IMPOSED BY GLAZING SYSTEM AND TRANSFER THEM TO THE BUILDING STRUCTURE.

**TYPICAL ANCHORS:** SEE ELEV. FOR SPACING

**1/4" TAPCONS**

INTO 2BY WOOD BUCKS OR WOOD STRUCTURE  
1-3/8" MIN. PENETRATION INTO WOOD

THRU 1BY WOOD BUCKS INTO MASONRY OR DIRECTLY INTO MASONRY  
1-1/4" MIN. EMBED INTO MASONRY OR CONC.

**1/4" DRILLFLEX OR EQUIV. SELF DRILLING SCREWS**

INTO METAL STRUCTURES (1/8" MIN. THICKNESS)

**#10 X 3/4" SMS**

INTO APPROVED MULLIONS (NO SHIM SPACE)

**ANCHOR EDGE DISTANCES**

INTO CONCRETE AND MASONRY = 1-1/4" MIN.

INTO WOOD STRUCTURE = 1" MIN.

INTO METAL STRUCTURE = 1/2" MIN.

**SEALANTS:**

FRAME AND VENT CORNERS AND INSTALLATION SCREWS AT SILL SEALED WITH WHITE/ALUMINUM COLORED SEALANT.

Engr: DR. HUMAYOON FAROOQ  
STRUCTURES  
FLA. PE # 16557  
C.A.N. 3538  
*1 JUL 27 2007*

PRODUCT RENEWED  
as complying with the Florida  
Building Code  
Acceptance No *07-0516.02*  
Expiration Date *08/22/2012*  
By *[Signature]*  
Miami Dade Product Control  
Division

**AL-FAROOQ CORPORATION**  
ENGINEERS, PLANNERS & PRODUCT DESIGN  
1235 SW 87 AVE  
MIAMI, FLORIDA 33174  
TEL. (305) 264-8100 FAX. (305) 262-6978  
COMP-ANL\W02-55LI

---

**LAWSON INDUSTRIES**  
8501 N.W. 90TH STREET  
MEDLEY, FL. 33160  
TEL. (305) 696-8660 FAX (305) 696-6006

---

no	date	by	description
A	03.05.03		NO CHANGE THIS SHEET
B	11.14.05		ANCHORS REV.
C	06.20.07		REV. PER BCCO COMMENTS

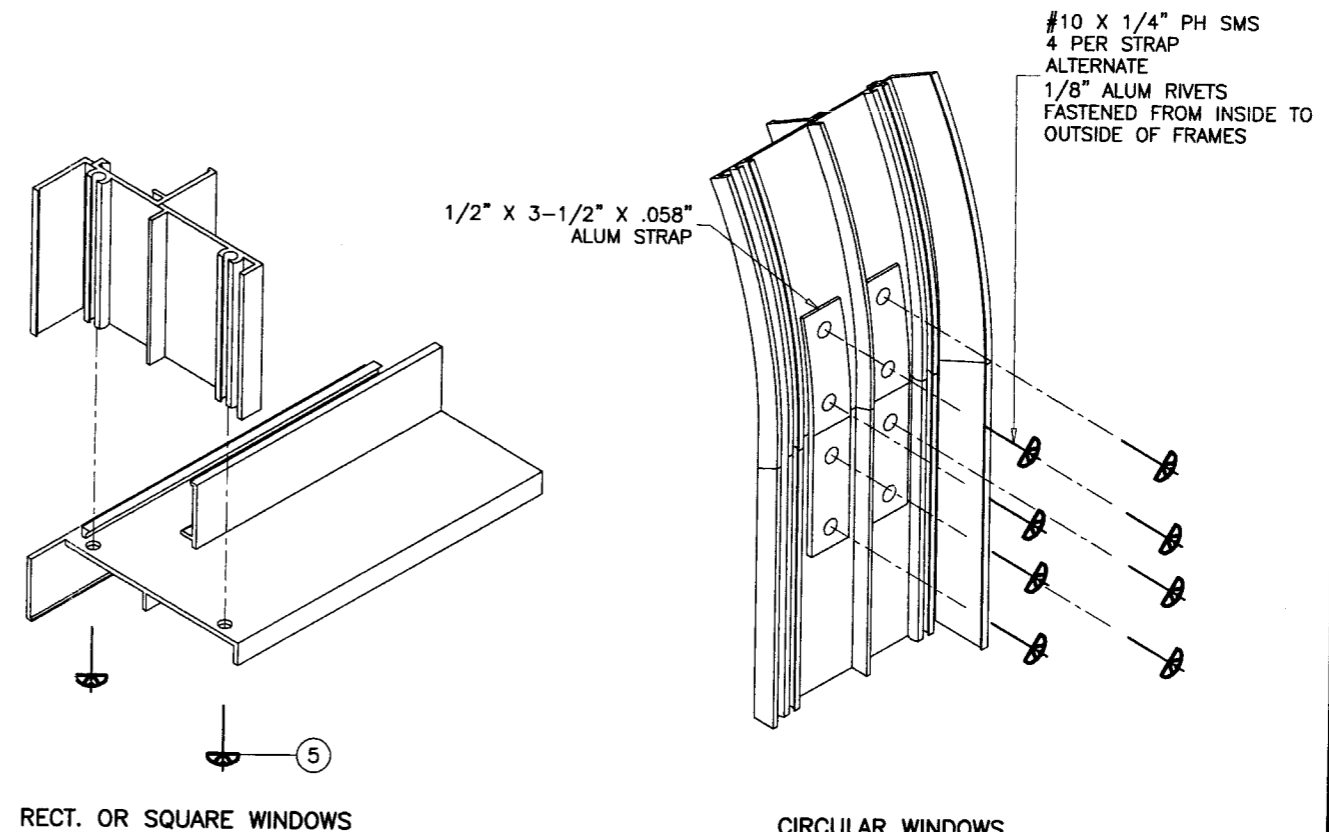
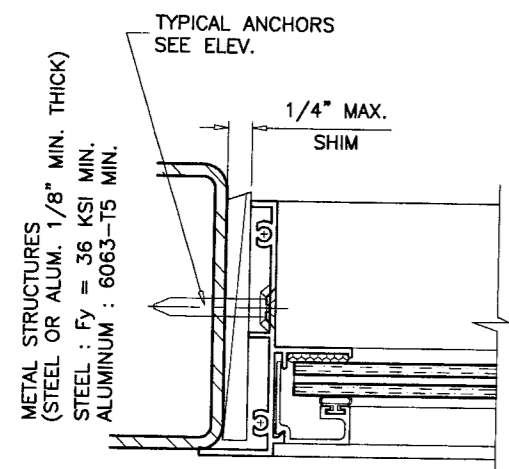
---

date: 06-06-02  
scale: 1/2" = 1"  
dr. by: HAMID  
chk. by:

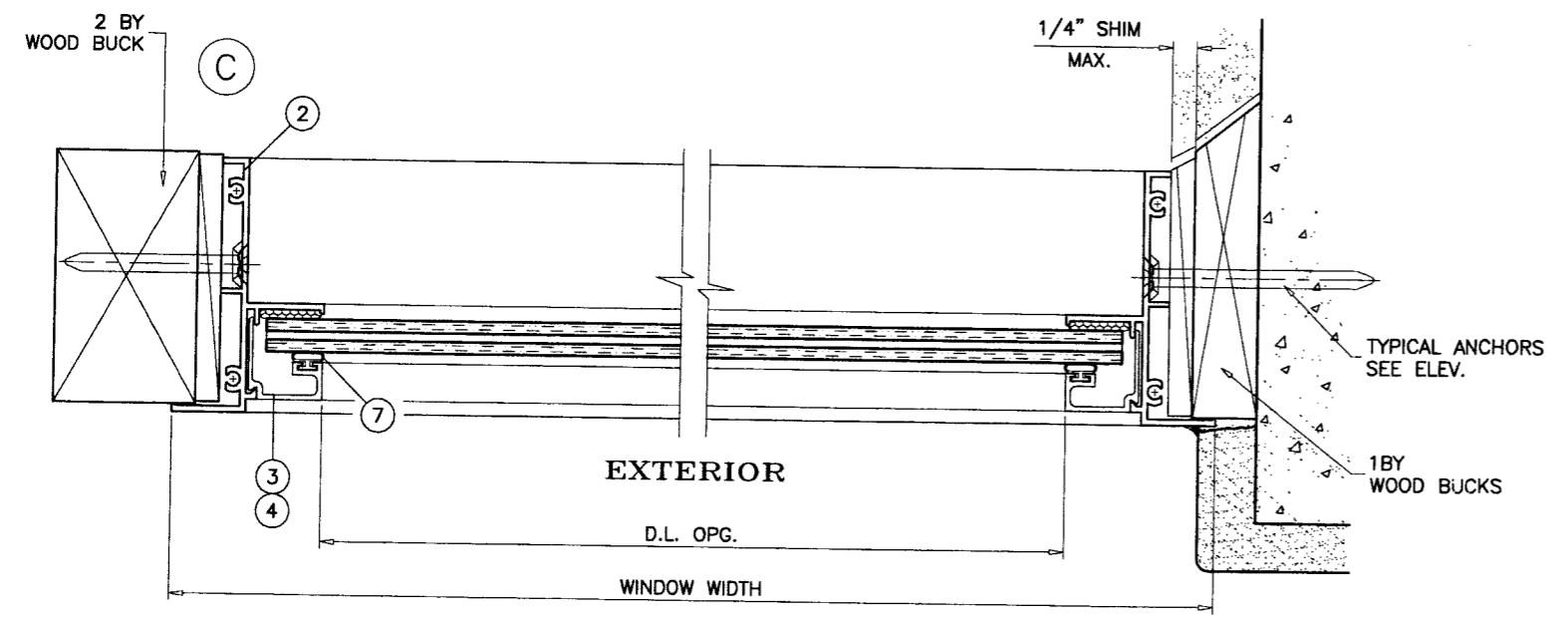
---

drawing no. **W02-55**  
sheet 5 of 6

ITEM	PART #	QUANTITY	DESCRIPTION	MATERIAL	MANF./SUPPLIER/REMARKS
1	L-4201	2	FRAME HEAD/SILL	6063-T5	-
2	L-4201	2	FRAME JAMB	6063-T5	-
3	L-7708	4	GLAZING BEAD (3/8" GLASS)	6063-T5	-
4	L-7708 TRIMMED	4	GLAZING BEAD (7/16" GLASS)	6063-T5	-
5	#8 X 3/4"	2/ CORNER	ASSEMBLY SCREWS	-	P.H. PHILLIPS
6	L-4204	AS REQD.	GLAZING BEAD AT CIRCULAR WDWS.	6063-T5	-
7	VWS-004	AS REQD.	GLAZING GASKET	SOFT PVC	-



TYPICAL CORNER CONSTRUCTION



Engr: DR. HUMAYOUN FAROOQ  
 STRUCTURES  
 FLA. PE # 16557  
 C.A.N. 3538

JUN 27 2007

PRODUCT RENEWED  
 as complying with the Florida  
 Building Code  
 Acceptance No 07-0516.02  
 Expiration Date 08/22/2012

By: *[Signature]*  
 Miami Dade Product Control  
 Division

**AL-FAROOQ CORPORATION**  
 ENGINEERS, PLANNERS & PRODUCT DESIGN  
 1235 SW 87 AVE  
 MIAMI, FLORIDA 33174  
 TEL. (305) 264-8100 FAX. (305) 262-6978

PW-4200/6200 ALUM FIXED WINDOW (IMPACT)  
**LAWSON INDUSTRIES**  
 8501 N.W. 90TH STREET  
 MEDLEY, FL. 33160  
 TEL. (305) 696-8660 FAX (305) 696-6006

no	date	by	description
A	03.05.03		STRAP DETAIL ADDED
B	11.14.05		NO CHANGE THIS SHEET
C	06.20.07		NO CHANGE THIS SHEET

date: 06-06-02  
 scale: 1/2" = 1"  
 dr. by: HAMID  
 chk. by:

drawing no.  
**W02-55**  
 sheet 6 of 6

COMP-ANL\W02-55LI